

Evolution in Productivity

95W Series Electric Guides/Lifters

DESTACO now offers the 95W electric guide/lifters with adjustable stroke speed and height up-to-60mm, by way of the integrated control module. They can be ordered and/or configured in a straight or redirected configuration and motors can be rotated for greater flexibility. They also features integrated sensors that allows for production variations.

Leading the way into the future, our growing BIW product line of smart, electric products eliminate CO₂ use, provide important data and control for optimizing efficiencies, and are a frontrunner for flexible manufacturing with Plug & Play solutions.

As production requirements evolve, DESTACO will continue to expand our product portfolio of electric solutions for use in all types of manufacturing processes.



Product Highlights/Options

- One size fits all - Variance reduction
- Can be used for positioning and lifting
- Energy efficiency - CO₂ reduction
- High repeatability and accuracy

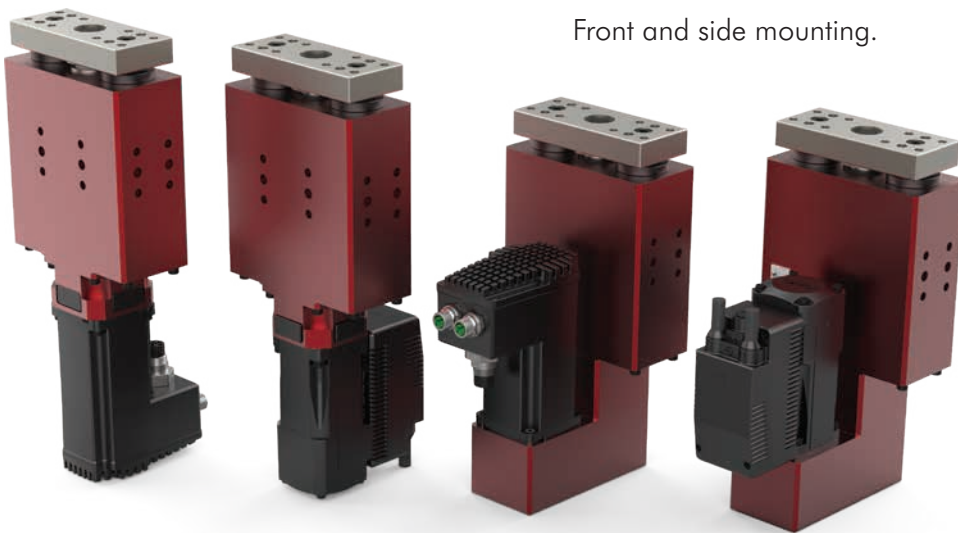


Features, Markets and Applications

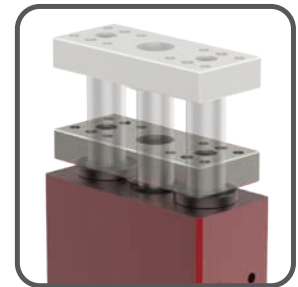
<p>ELECTRIC</p>	<ul style="list-style-type: none"> • Daisy chain connection requires less cables • Two control and drive options available • Fast start up during installation 	<p>AUTOMOTIVE</p>	<p>ASSEMBLY</p>
<p>PERFORMANCE</p>	<ul style="list-style-type: none"> • Controlled motion provides smooth extension and retraction • Infinite stroke positions for multiple applications • Adjustable speed offers cycle time optimization 	<p>INDUSTRIAL</p>	<p>WELDING</p>
<p>NO/LOW MAINTENANCE</p>	<ul style="list-style-type: none"> • Predictive maintenance for improved production planning • Provides quick restart after emergency stop 	<p>AEROSTRUCTURE</p>	<p>FIXTURE/TESTING</p>
		<p>FOOD & PACKAGING</p>	<p>HARSH ENVIRONMENT</p>

95W Electric Guide/Lifter

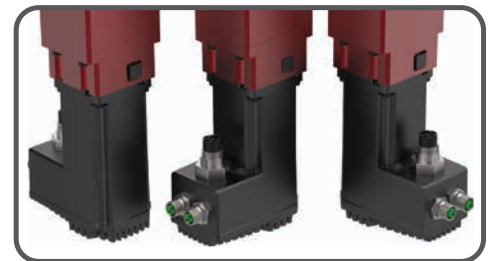
DESTACO's 95W series guide/lifter features adjustable extend and retract stroke and speed control.



Front and side mounting.



Adjustable Stroke
Up-to-60mm



Motor connection positions can be rotated in 90° increments

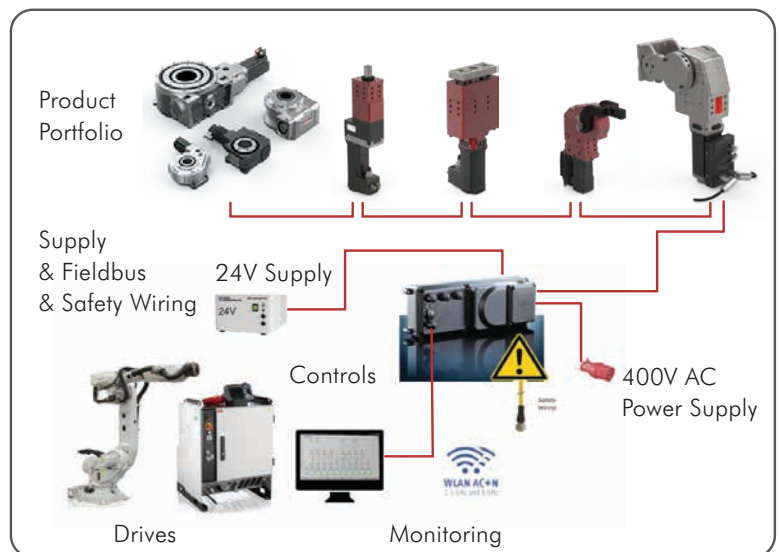
Drive motors can be ordered in an inline (straight) or redirected configuration

Two control and drive options available (400V and 48V)

Electric Body-in-White Product Portfolio



Contact DESTACO to learn more about our Electric Solutions and how we are evolving our customers' productivity in manufacturing.



Dimensions and technical information are subject to change without notice.

PC_95W-F_0324_GB

CORPORATE HEADQUARTERS
US
+1-888-DESTACO
+1-248-836-6700
northamerica@destaco.com

DE
+49-6171-705-0
europe@destaco.com

PL
+48-506002115
poland@destaco.com

FR
+33-4-7354-5001
france@destaco.com

NL
+31-297285332
benelux@destaco.com

UK
+44-1902-797980
uk@destaco.com

CZ
+420-603-577-341
czech@destaco.com

SP
+34-936361680
spain@destaco.com

IN
+91-80-41123421-426
india@destaco.com

CN
+86-21-6081-2888
china@destaco.com

SG
singapore@destaco.com

TH
+66-2-326-0812
asia@destaco.com

CA
canada@destaco.com

MX
mexico@destaco.com