

Product overview



Couplings

1. SIMPLE SHAFT CONNECTION

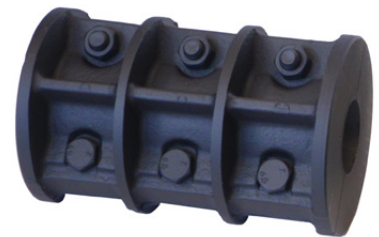
Rigid coupling

- Made of steel, standard phosphating; stainless steel version available
- Extreme form-fit rigidity
- High torque transmission
- Maintenance and wear-free
- Up to 1,420 Nm torque and 50 mm bore
- Max. speed 5,500 rpm



Clamp coupling DIN 115

- Made of cast iron or steel
- Absorbs shocks and radial / axial loads
- Vertical or horizontal arrangement
- With keyway according to DIN 6885/1
- Up to 56,000 Nm torque and 200 mm bore
- Max. speed 1,700 rpm



Flange coupling DIN 116

- Made of cast iron or steel
- Absorbs shocks and radial / axial loads
- Vertical or horizontal arrangement
- With keyway according to DIN 6885/1
- Up to 1,425,000 Nm torque and 500 mm bore
- Max. speed 6,850 rpm



Chain coupling

- Made of steel, fully machined, standard surface phosphating.
- Shafts do not need to be exactly aligned, small axial play permissible
- Hardened teeth
- Maintenance without hub disassembly
- Up to 8,000 Nm torque and 110 mm bore
- Max. speed 6,000 rpm



2. ELASTIC COUPLINGS

Elastic jaw coupling (backlash free)

- Made of steel or aluminium, fully machined
- Elastomer element available in various degrees of hardness
- Vertical or horizontal arrangement
- Optionally available with extension
- Up to 55,000 Nm torque and 200 mm bore
- Max. speed 6,850 rpm



Polynorm coupling

- Made of grey cast iron
- Compensation of vibrations and drive shocks
- Compensation of shaft misalignments
- Maintenance-free, fail-safe, compact, axially pluggable
- Up to 26,800 Nm torque and 200 mm bore
- Max. speed 5,000 rpm



VEBOFLEX coupling

- Made of grey cast iron or steel
- Compensation of radial, axial and angular shaft misalignments
- High wear resistance, low maintenance
- Torsionally flexible, vibration-damping, puncture-proof
- Up to 1,300,000 Nm torque and 640 mm bore
- Max. speed 5,000 rpm



MEGIFLEX shaft coupling

- Made of fully machined steel
- Suitable for reversing and intermittent operation
- Maintenance and wear-free
- Axially and angularly flexible, puncture-proof
- Up to 3,000 Nm torque and 80 mm bore
- Max. speed 14,000 rpm



3. TORSIONALLY RIGID COUPLINGS

Metall bellow coupling

- Made of fully machined aluminium, stainless steel bellows
- Suitable for high operating temperatures (>300°C)
- Maintenance and wear-free
- Optionally available with extension
- Up to 30,000 Nm torque and 45 mm bore
- Max. speed 10,000 rpm



Gear coupling

- Made of steel, with standard surface phosphating, sleeve made of polyamide
- Statically balanced
- Maintenance and lubrication free
- Vibration damping
- Up to 5,000 Nm torque and 125 mm bore
- Max. Speed 14,000 rpm



Gear coupling, gear joint spindle

- Made of high-quality tempered steel
- Compensation of angular, radial and axial deviations
- Suitable for reversing operation
- Smooth running due to tooth head centring
- With optical wear indicator
- Up to 22,000,000 Nm torque and 1,035 mm bore



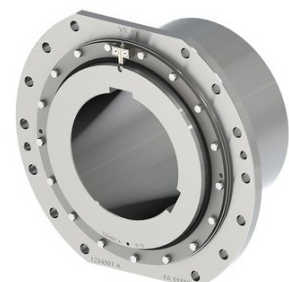
Steel lamina coupling

- Made of steel, fully machined
- Blade pack made of stainless steel INOX
- Torsionally stiff, maintenance-free and durable
- Optionally available with double plate pack or extension
- Up to 130,000 Nm torque and 205 mm bore
- Max. speed 14,500 rpm



Drum coupling (rope drum joint)

- Made of steel, fully machined
- Positive-locking power transmission
- High permissible torque with small installation space
- Optionally with automatic wear indicator
- Up to 1,800,000 Nm torque and 625 mm bore



4. SAFETY COUPLING / FRICTION TORQUE LIMITERS

Mechanical torque limiters

- Friction torque limiters
- Balls and rollers torque limiters
- Torque limiter free rotation
- Axial force limiters

Pneumatic torque limiters

- Roller phase pneumatic clutches
- Friction pneumatic clutches
- Unlocking torque limiter

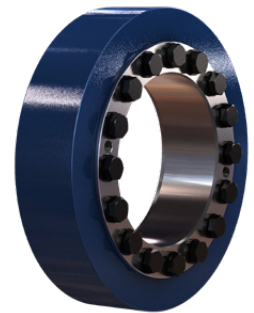
LEARN
MORE



5. SPECIAL CONNECTING ELEMENTS

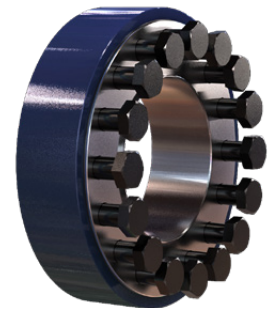
Friction connections

- Mechanical friction connections
- Hydraulic friction connections
- Spli friction connections
- Shaft couplings
- Flange couplings



Locking assemblies

- Internal clamping sets
- External clamping elements



TaperLock (TL) Clamping bushes

- Shaft-hub connection for all geometries and pulley types.
- Standard stock of bush size: 1008 | 1108 | 1210 | 1610
- 1615 | 2012 | 2517 | 3020 | 3030 | 3535 | 4040 | 4545 | 5050
- Short-term from own production: 6050 | 7060 | 8065 | 10085
- Special version available (metric thread):
- Designs with cylindrical bore and groove as well as
- Friction connections (quenched and tempered steel) available



FLOHR - PRODUCTS OVERVIEW

Gears

- Spiral toothed bevel gears
- Bevel gears
- Worm gears
- Spur gears
- Special gears



Gear Technology

- Bevel gearboxes
- Angle-planetary gearboxes
- Worm gearboxes
- Cam drives and indexing units
- Cam components
- Special gearboxes



Couplings

- Rigid and flexible couplings
- Frictional connections
- Drum-coupling
- Gear-couplings
- Safety couplings



Friction connections

- Shrink discs
- Shaft couplings
- Flange couplings
- Locking units



Clamping technology

- Manual and pneumatic clamping solutions
- Power clamps
- Pivot units
- End effector solutions
- Linear units
- Grippers



Belt drives

- V-belt and flat belt pulleys
- Flywheels
- Special pulleys
- Motor clamping systems
- Drive belts
- Customer designed castings
- Accessories



Sensor systems

- Incremental encoders
- Magnetic encoders
- Absolute encoders
- Electronic overspeed switches
- Electronic position switches
- Universal encoder systems
- Systems



Contract manufacturing

- Turning, milling, grinding
- Grooving and broaching
- Balancing
- Calculation and design
- Assembly
- Service and repair



FLOHR
INDUSTRIETECHNIK GMBH

FLOHR Germany

FLOHR INDUSTRIETECHNIK GmbH
Im Unteren Tal 1
D-79761 Waldshut-Tiengen
Phone: +49 (0) 77 51 / 87 31 0
info@flohr-industrietechnik.de
www.flohr-industrietechnik.de

FLOHR Switzerland

FLOHR INDUSTRIETECHNIK
Zilistude 164
CH-5465 Mellikon
Phone: +41 (0) 56 / 267 08 10
info@flohr.ch
www.flohr.ch

FLOHR Austria

FLOHR INDUSTRIETECHNIK
Bucherstraße 37b
A-6922 Wolfurt
Phone: +43 (0) 5572 / 372 158
info@flohr.at
www.flohr.at