

Product overview

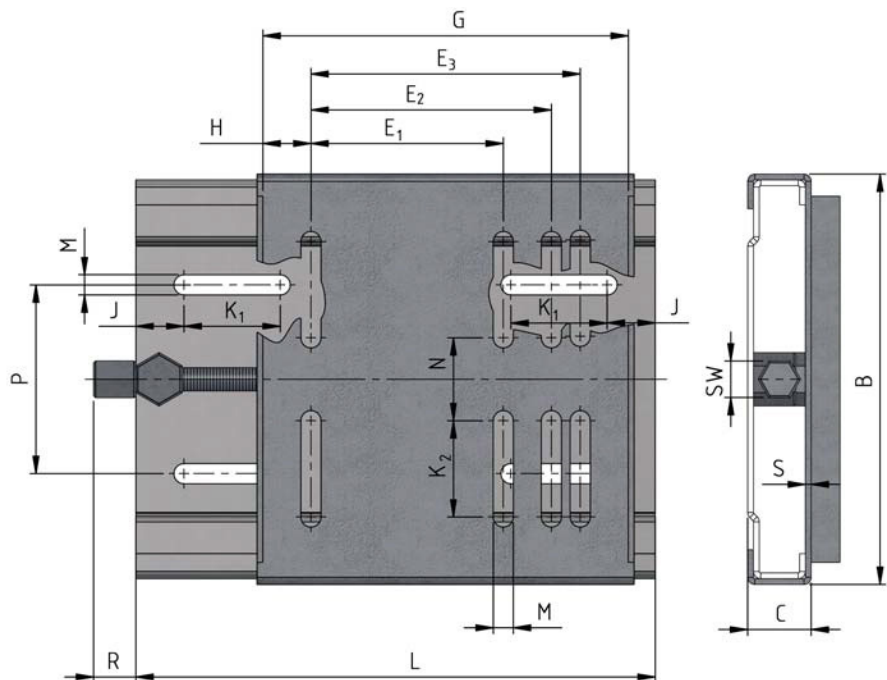


Motor slide bases

Steel version

MOTOR SLIDE BASES

STEEL | MONOPLATE



| motor size | dimensions [mm] | | | | | | | | | | | | | | | | |
|------------|-----------------|-----|----|----------------|----------------|----------------|-----|------|----|----------------|----------------|------|-----|-----|-----|----|---|
| | L | B | C | E ₁ | E ₂ | E ₃ | G | H | J | K ₁ | K ₂ | M | N | P | R | SW | S |
| 63 - 90 | 270 | 194 | 33 | 100 | 125 | 140 | 190 | 25 | 25 | 50 | 50 | 10,5 | 33 | 98 | 200 | 19 | 3 |
| 90 - 120 | 307 | 213 | 33 | 140 | 160 | 190 | 255 | 32,5 | 28 | 50 | 50 | 10,5 | 62 | 108 | 20 | 19 | 3 |
| 100 - 132 | 340 | 290 | 40 | 160 | 190 | 216 | 286 | 35 | 28 | 63 | 47,5 | 12,5 | 120 | 165 | 25 | 22 | 4 |
| 100 - 132 | 430 | 290 | 40 | 160 | 190 | 216 | 286 | 35 | 28 | 63 | 47,5 | 12,5 | 120 | 165 | 25 | 22 | 4 |
| 160 - 180 | 430 | 370 | 40 | - | 254 | 279 | 379 | 50 | 30 | 62 | 62 | 12,5 | 163 | 248 | 25 | 22 | 4 |
| 160 - 180 | 490 | 370 | 40 | - | 254 | 279 | 379 | 50 | 30 | 62 | 62 | 12,5 | 163 | 248 | 25 | 22 | 4 |
| 180 - 200 | 490 | 410 | 40 | - | 279 | 318 | 420 | 50 | 30 | 60 | 52 | 17 | 225 | 285 | 25 | 22 | 4 |
| 200 - 225 | 585 | 450 | 50 | - | 318 | 356 | 468 | 56 | 30 | 60 | 52 | 17 | 248 | 300 | 25 | 22 | 5 |
| 250 | 600 | 470 | 65 | - | - | 406 | 515 | 54,5 | 30 | 60 | 70 | 22 | 229 | 320 | 25 | 28 | 5 |
| 280 | 735 | 570 | 65 | - | - | 457 | 585 | 64 | 30 | 70 | 70 | 22 | 320 | 420 | 25 | 28 | 5 |



MOTOR SLIDE BASES

STEEL | MONOPLATE

Slideway V_{\min}

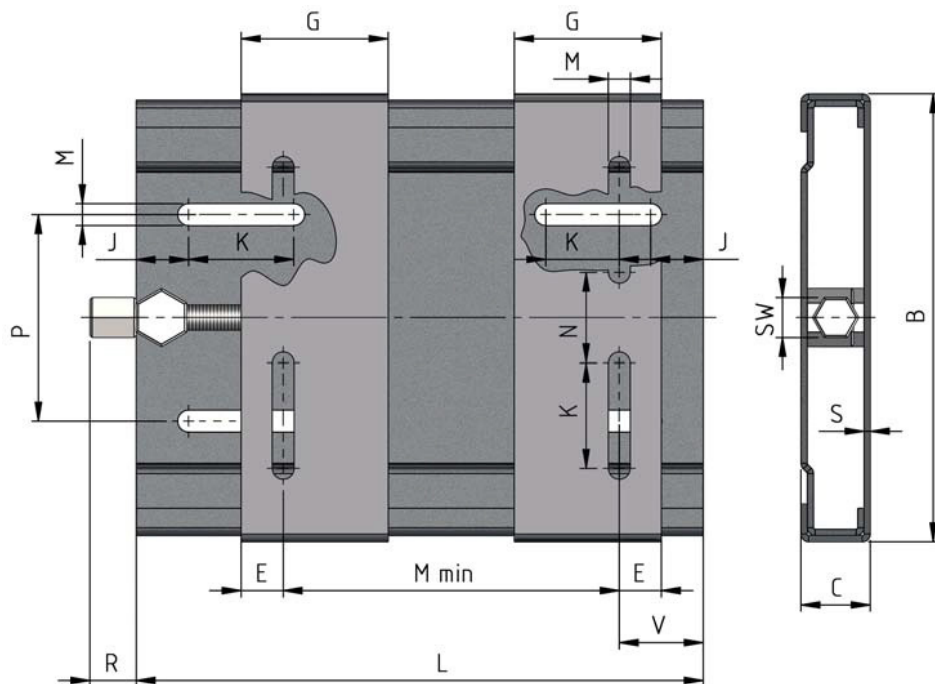
| size | motor size | | | | | | | | | | | | weight kg |
|------|------------|----|----|-----|-----|-----|-----|-----|-----|-----|-----|-----|--------------|
| | 63 | 80 | 90 | 100 | 112 | 132 | 160 | 180 | 200 | 225 | 250 | 280 | |
| 270 | 80 | 80 | 80 | | | | | | | | | | 3,1 |
| 307 | | | 52 | 52 | 52 | | | | | | | | 4,1 |
| 340 | | | | 54 | 54 | 54 | | | | | | | 7,9 |
| 430 | | | | 144 | 144 | 144 | | | | | | | 8,9 |
| 430 | | | | | | | 51 | 51 | | | | | 12,0 |
| 490 | | | | | | | 111 | 111 | | | | | 12,7 |
| 490 | | | | | | | | 70 | 70 | | | | 14,6 |
| 585 | | | | | | | | | 117 | 117 | | | 23,7 |
| 600 | | | | | | | | | | | 85 | | 28,1 |
| 735 | | | | | | | | | | | | 150 | 38,2 |

- For all common motor sizes
- Easy to install, time-saving
- Optimum and quick adjustability, flexible use
- Corrosion protection by cathodic dip painting (KTL)
- Also available in galvanised version
- Weight-optimised design
- Ideal solution for light drives
- For heavy drive motor slide rails made of EN-GJL 200



MOTOR SLIDE BASES

STEEL | DUOPLATE WITH DIVIDED PLATE



| motor size | dimensions [mm] | | | | | | | | | | | | | |
|------------|-----------------|-----|----|------------------|----|----|----|------|------|-----|----|-----|----|---|
| | L | B | C | M _{min} | G | E | J | K | M | N | R | P | SW | S |
| 63 - 80 | 210 | 195 | 33 | 100 | 70 | 20 | 25 | 50 | 10,5 | 43 | 30 | 98 | 19 | 3 |
| 63 - 90 | 270 | 195 | 33 | 100 | 70 | 20 | 25 | 50 | 10,5 | 43 | 30 | 98 | 19 | 3 |
| 90 - 132 | 340 | 290 | 40 | 140 | 95 | 27 | 29 | 62,5 | 12,5 | 90 | 30 | 165 | 22 | 4 |
| 90 - 160 | 430 | 290 | 40 | 140 | 95 | 27 | 29 | 62,5 | 12,5 | 90 | 30 | 165 | 22 | 4 |
| 160 - 180 | 490 | 410 | 40 | 110 | 95 | 40 | 30 | 60 | 15 | 193 | 30 | 284 | 22 | 4 |

Slideway V_{min}

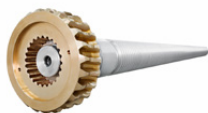
| size | motor size | | | | | | | | | weight kg |
|------|------------|-----|-----|-----|-----|-----|-----|-----|-----|--------------|
| | 63 | 71 | 80 | 90 | 100 | 112 | 132 | 160 | 180 | |
| 210 | 70 | 58 | 45 | | | | | | | 2,3 |
| 270 | 130 | 118 | 105 | 90 | | | | | | 2,7 |
| 340 | | | | 146 | 126 | 96 | 70 | | | 6,3 |
| 430 | | | | 236 | 216 | 186 | 160 | 122 | | 7,4 |
| 490 | | | | | | | 156 | 131 | | 11,7 |



FLOHR - PRODUCTS OVERVIEW

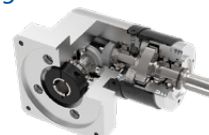
Gears

- Spiral toothed bevel gears
- Bevel gears
- Worm gears
- Spur gears
- Special gears



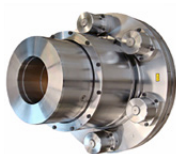
Gear Technology

- Bevel gearboxes
- Angle-planetary gearboxes
- Worm gearboxes
- Cam drives and indexing units
- Cam components
- Special gearboxes



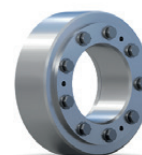
Couplings

- Rigid and flexible couplings
- Frictional connections
- Drum-coupling
- Gear-couplings
- Safety couplings



Friction connections

- Shrink discs
- Shaft couplings
- Flange couplings
- Locking units



Clamping technology

- Manual and pneumatic clamping solutions
- Power clamps
- Pivot units
- End effector solutions
- Linear units
- Grippers



Belt drives

- V-belt and flat belt pulleys
- Flywheels
- Special pulleys
- Motor mounting systems
- Drive belts
- Customer designed castings
- Accessories



Sensor systems

- Incremental encoders
- Magnetic encoders
- Absolute encoders
- Electronic overspeed switches
- Electronic position switches
- Universal encoder systems
- Systems



Contract manufacturing

- Turning, milling, grinding
- Grooving and broaching
- Balancing
- Calculation and design
- Assembly
- Service and repair




INDUSTRIETECHNIK GMBH

FLOHR Germany

FLOHR INDUSTRIETECHNIK GmbH
Im Unteren Tal 1
D-79761 Waldshut-Tiengen
Phone: +49 (0) 77 51 / 87 31 0
info@flohr-industrietechnik.de
www.flohr-industrietechnik.de

FLOHR Switzerland

FLOHR INDUSTRIETECHNIK GmbH
Zilistude 164
CH-5465 Mellikon
Phone: +41 (0) 56 / 267 08 10
info@flohr.ch
www.flohr.ch

FLOHR Austria

FLOHR INDUSTRIETECHNIK
Bucherstraße 37b
A-6922 Wolfurt
Phone: +43 (0) 5572 / 372 158
info@flohr.at
www.flohr.at