

Product overview

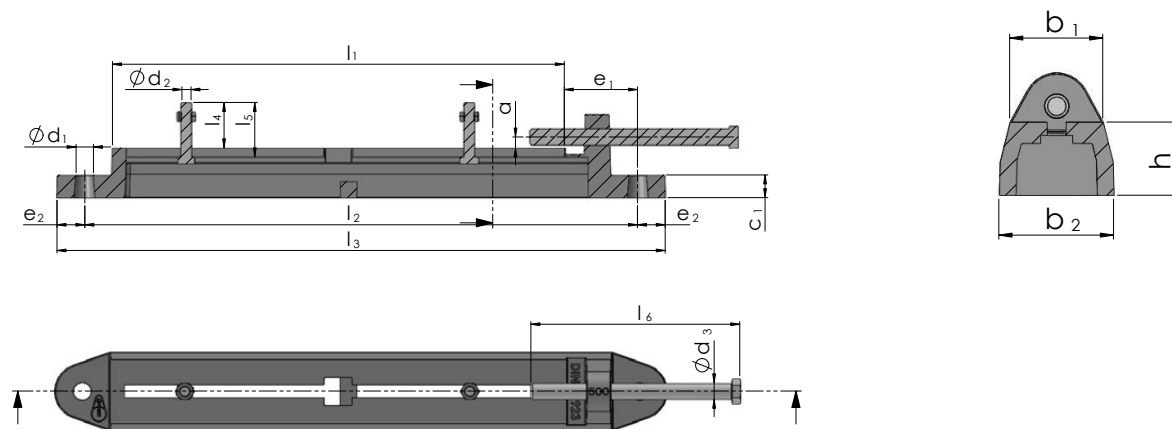


Motor slide rails
DIN 42923

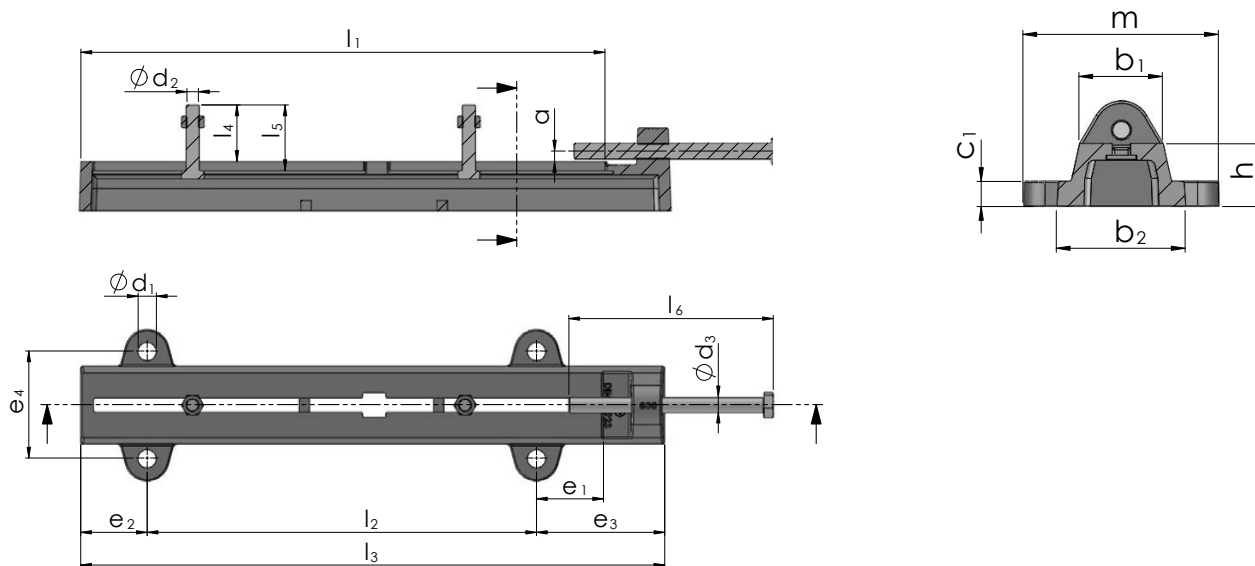
MOTOR SLIDE RAILS

DIN 42923

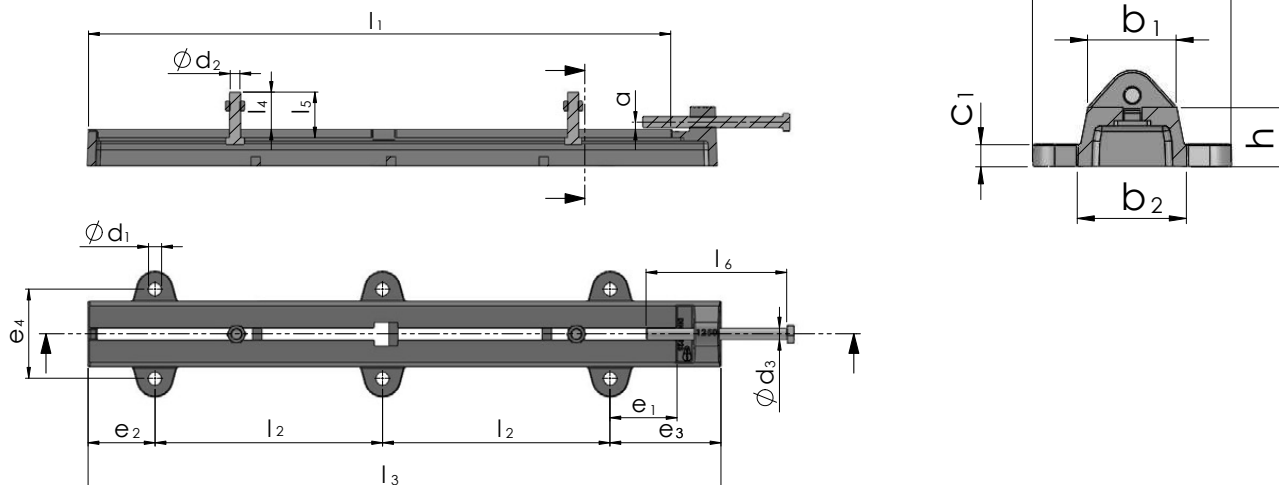
Sliding length from 265 to 500 mm



Sliding length from 630 to 1.000 mm



Sliding length 1.250 mm

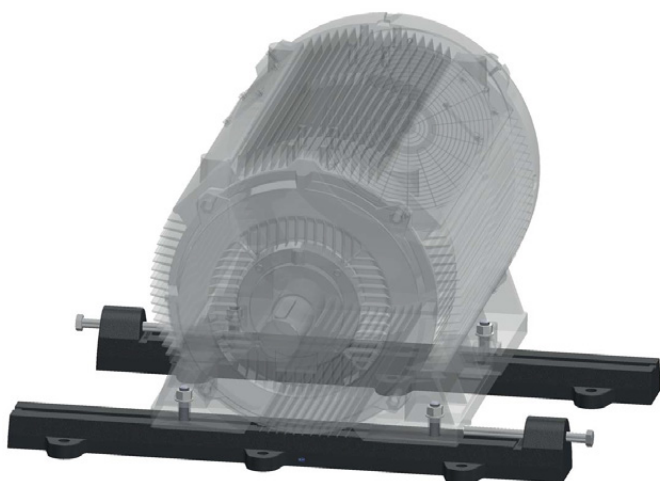


MOTOR SLIDE RAILS

DIN 42923

motor size	sliding length [mm]	dimensions [mm]														motor fixing bolts [mm]	clamping bolts [mm]	weight per set [kg]
		l ₁	a	b ₁	b ₂	c ₁	d ₁	e ₁	e ₂	e ₃	e ₄	h	l ₂	l ₃	l ₄			
80 90	265	6	40	50	18	10	45	15	-	-	35	325	355	28	-	M 8 x 35	M 10 x 120	3,0
	315	8	45	55	18	12	55	20	-	-	35	390	430	28	-	M 8 x 35	M 12 x 160	5,0
100	355	8	50	65	23	12	55	20	-	-	40	430	470	37	-	M 10 x 45	M 12 x 160	8,0
112 132	400	8	55	70	25	15	65	25	-	-	45	480	530	37	-	M 10 x 45	M 12 x 160	10,5
160 180	500	12	70	85	30	19	80	30	-	-	55	610	670	50	-	M 12 x 60	M 20 x 240	19,5
200 225	630	12	85	100	35	19	80	80	160	130	65	470	710	58	182	M 16 x 70	M 20 x 240	26,0
250 280	800	16	100	120	35	28	100	100	200	165	75	600	900	76	225	M 20 x 90	M 24 x 300	49,5
315	1000	16	120	140	40	28	140	140	240	190	80	720	1100	82	250	M 24 x 100	M 24 x 300	72,0
355	1250	16	120	140	30	28	140	140	240	190	80	485	1350	82	250	M 24 x 100	M 24 x 300	85,0

Example of use



- Good damping characteristics due to material cast iron EN-GJL 200 according to DIN EN 1561
- Optimal adjustability
- Quick availability due to stock
- Delivery includes adjustment and fixing screws
- Delivery with galvanized screws possible
- Other dimensions on request



FLOHR - PRODUCTS OVERVIEW

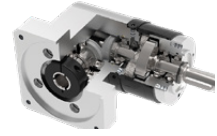
Gears

- Spiral toothed bevel gears
- Bevel gears
- Worm gears
- Spur gears
- Special gears



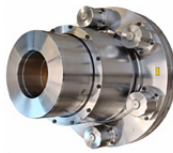
Gear Technology

- Bevel gearboxes
- Angle-planetary gearboxes
- Worm gearboxes
- Cam drives and indexing units
- Cam components
- Special gearboxes



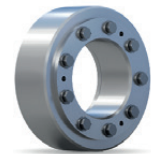
Couplings

- Rigid and flexible couplings
- Frictional connections
- Drum-coupling
- Gear-couplings
- Safety couplings



Friction connections

- Shrink discs
- Shaft couplings
- Flange couplings
- Locking units



Clamping technology

- Manual and pneumatic clamping solutions
- Power clamps
- Pivot units
- End effector solutions
- Linear units
- Grippers



Belt drives

- V-belt and flat belt pulleys
- Flywheels
- Special pulleys
- Motor clamping systems
- Drive belts
- Customer designed castings
- Accessories



Sensor systems

- Incremental encoders
- Magnetic encoders
- Absolute encoders
- Electronic overspeed switches
- Electronic position switches
- Universal encoder systems
- Systems



Contract manufacturing

- Turning, milling, grinding
- Grooving and broaching
- Balancing
- Calculation and design
- Assembly
- Service and repair




INDUSTRIE TECHNIK GMBH

FLOHR Germany

FLOHR INDUSTRIE TECHNIK GmbH
Im Unteren Tal 1
D-79761 Waldshut-Tiengen
Phone: +49 (0) 77 51 / 87 31 0
info@flohr-industrietechnik.de
www.flohr-industrietechnik.de

FLOHR Switzerland

FLOHR INDUSTRIE TECHNIK GmbH
Zilistude 164
CH-5465 Mellikon
Phone: +41 (0) 56 / 267 08 10
info@flohr.ch
www.flohr.ch

FLOHR Austria

FLOHR INDUSTRIE TECHNIK
Bucherstraße 37b
A-6922 Wolfurt
Phone: +43 (0) 5572 / 372 158
info@flohr.at
www.flohr.at