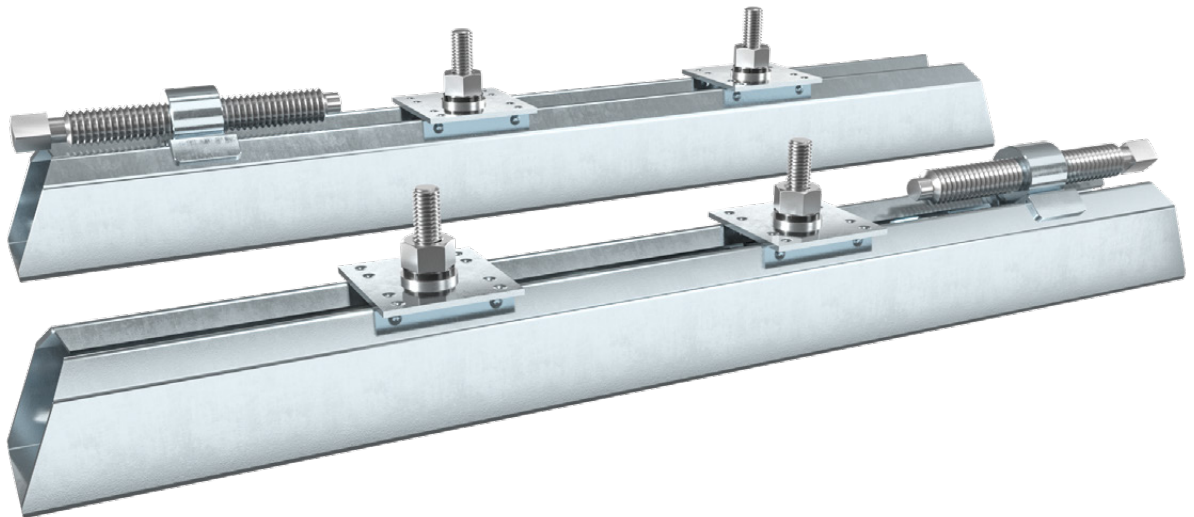


Product overview



Motor slide rails

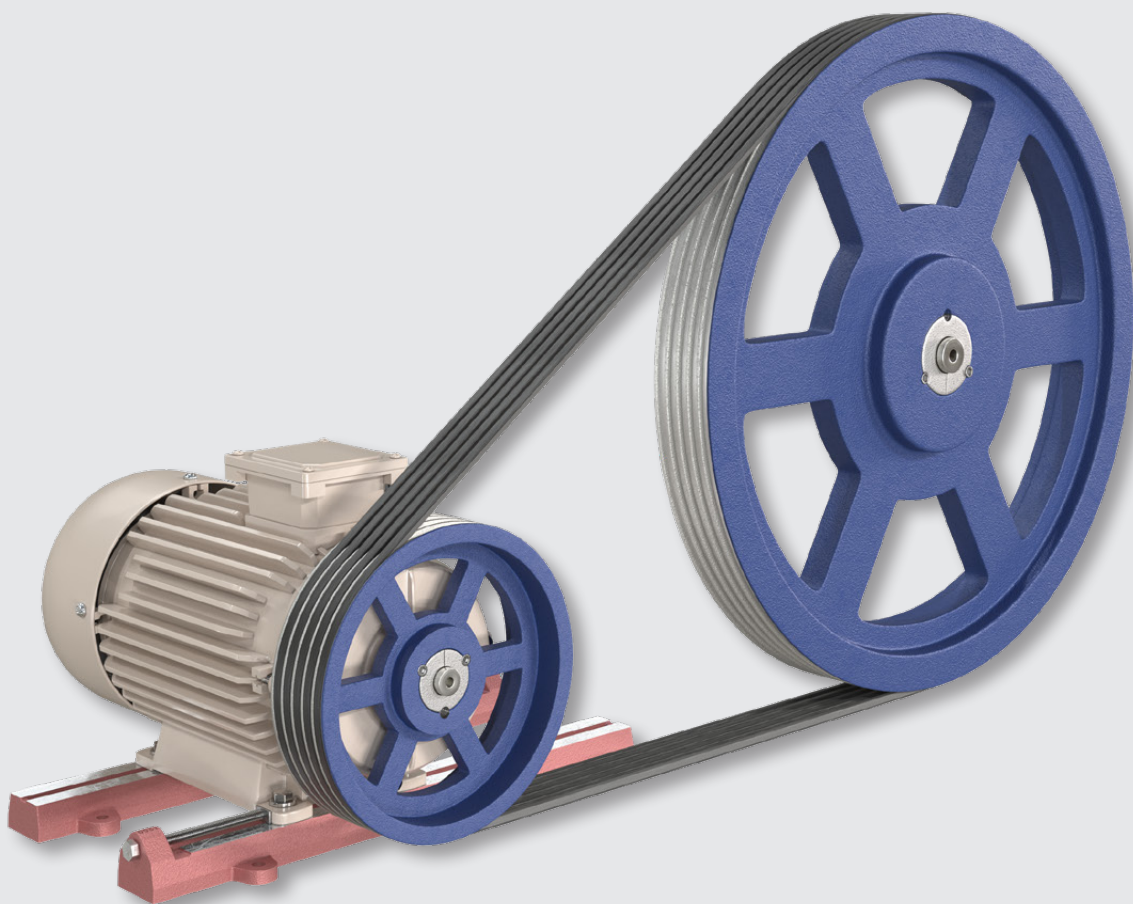
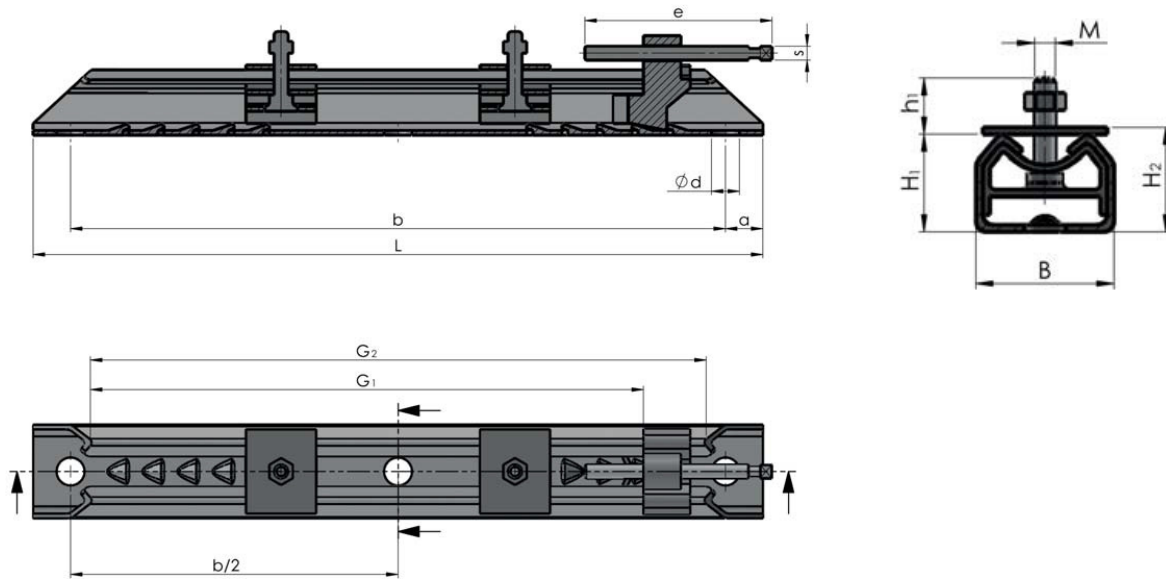
Steel version

MOTOR SLIDE RAILS

STEEL

Sliding length from 240 to 1065 mm

Version with adjustable clamping piston



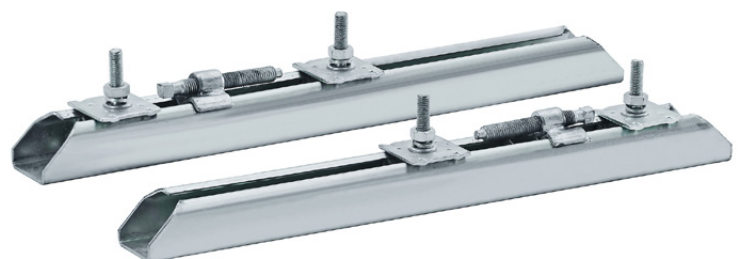
Drive situation with motor slide rail

MOTOR SLIDE RAILS

STEEL

motor size	type	sliding length [mm]	total length [mm]	dimensions [Nm]		dimensions [mm]								weight per set [kg]
				M x h1	e x s	G ₂	a	b	b/2	Ø d	B	H ₁	H ₂	
63 71	312/6	240	312	M 6 x 19	75 x 6	262	16	280	-	12	40	28	30	1,4
80 90	312/8	240	312	M 8 x 27	75 x 6	262	16	280	-	12	40	28	30	1,5
63 71	375/6	305	375	M 6 x 19	75 x 6	325	16	343	-	12	40	28	30	1,5
80 90	375/8	305	375	M 8 x 27	75 x 6	325	16	343	-	12	40	28	30	1,6
100 112	375/10	305	375	M 10 x 35	75 x 6	325	16	343	-	12	40	28	30	1,6
80 90	395/8	302	395	M 8 x 28	97 x 8	325	20	355	-	12	50	40	43	3,4
100 112	395/10	302	395	M 10 x 32	97 x 8	325	20	355	-	12	50	40	43	3,4
80 90	495/8	405	495	M 8 x 29	97 x 8	425	20	455	-	12	50	40	43	4,0
100 112 132	495/10	405	495	M 10 x 35	97 x 8	425	20	455	-	12	50	40	43	4,0
160	495/12	405	495	M 12 x 49	97 x 8	425	20	455	-	12	50	40	43	4,0
132	530/10	413	530	M 10 x 37	119 x 19	442	25	480	-	14	60	50	54	6,4
160	530/12	413	530	M 12 x 49	119 x 19	442	25	480	-	14	60	50	54	6,4
132	630/10	515	630	M 10 x 37	119 x 19	542	25	580	-	14	60	50	54	8,2
160 180	630/12	515	630	M 12 x 45	119 x 19	542	25	580	-	14	60	50	54	8,2
160 180	686/12	538	686	M 12 x 43	154 x 12	575	28	630	315	18	75	60	64	12,8
200 225	686/16	538	686	M 16 x 62	154 x 12	575	28	630	315	18	75	60	64	12,8
200 225	864/16	700	864	M 16 x 60	300 x 16	810	32	800	400	24	90	75	-	16,6
250 280	864/20	700	864	M 20 x 68	300 x 16	810	32	800	400	24	90	75	-	16,6
250 280	1075/20	865	1072	M 20 x 77	360 x 19	995	36	1000	500	30	112	100	-	33,4
315	1072/24	865	1072	M 24 x 88	360 x 19	995	36	1000	500	30	112	100	-	33,4
315 355	1330/24	1065	1330	M 24 x 95	430 x 33	1215	40	1250	625	30	130	125	-	56,6

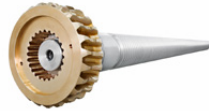
- For all common motor sizes
- Easy to install, time-saving, good value
- Optimal and quick adjustability, flexible use
- Corrosion protection by galvanisation
- Weight-optimised design
- Ideal solution for light drives



FLOHR - PRODUCTS OVERVIEW

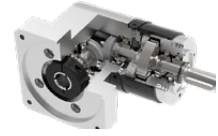
Gears

- Spiral toothed bevel gears
- Bevel gears
- Worm gears
- Spur gears
- Special gears



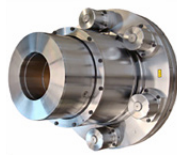
Gear Technology

- Bevel gearboxes
- Angle-planetary gearboxes
- Worm gearboxes
- Cam drives and indexing units
- Cam components
- Special gearboxes



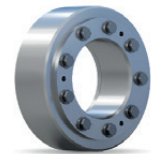
Couplings

- Rigid and flexible couplings
- Frictional connections
- Drum-coupling
- Gear-couplings
- Safety couplings



Friction connections

- Shrink discs
- Shaft couplings
- Flange couplings
- Locking units



Clamping technology

- Manual and pneumatic clamping solutions
- Power clamps
- Pivot units
- End effector solutions
- Linear units
- Grippers



Belt drives

- V-belt and flat belt pulleys
- Flywheels
- Special pulleys
- Motor mounting systems
- Drive belts
- Customer designed castings
- Accessories



Sensor systems

- Incremental encoders
- Magnetic encoders
- Absolute encoders
- Electronic overspeed switches
- Electronic position switches
- Universal encoder systems
- Systems



Contract manufacturing

- Turning, milling, grinding
- Grooving and broaching
- Balancing
- Calculation and design
- Assembly
- Service and repair




INDUSTRIE TECHNIK GMBH

FLOHR Germany

FLOHR INDUSTRIE TECHNIK GmbH
Im Unteren Tal 1
D-79761 Waldshut-Tiengen
Phone: +49 (0) 77 51 / 87 31 0
info@flohr-industrietechnik.de
www.flohr-industrietechnik.de

FLOHR Switzerland

FLOHR INDUSTRIE TECHNIK GmbH
Zilistude 164
CH-5465 Mellikon
Phone: +41 (0) 56 / 267 08 10
info@flohr.ch
www.flohr.ch

FLOHR Austria

FLOHR INDUSTRIE TECHNIK
Bucherstraße 37b
A-6922 Wolfurt
Phone: +43 (0) 5572 / 372 158
info@flohr.at
www.flohr.at