

2010 SERIES

Vertical Hold Down Clamps | Product Overview

Features:

- Large hand clearance for improved safety
- Bolt pattern interchangeable with 210 Series
- Over two times the holding capacity of 210 Series
- Hardened bushings at key pivot points
- Near vertical clamping contact

Applications:

- Checking fixtures
- Assembly & test
- Light machining
- Woodworking

Also Available:

See page MC-ACC-1 for accessories
Accepts M10 or 3/8 spindle accessories

Covered under one or more U.S./International Patents

2010-U

Flanged Base
U-Bar



2010-S

Flanged Base
Solid Bar



2010-UB

Straight Base
U-Bar



2010-SB

Straight Base
Solid Bar



2010-UR

Flanged Base
U-Bar

DESTACO®
Toggle Lock
Plus



2010-SR^①

Flanged Base
Solid Bar

DESTACO®
Toggle Lock
Plus



2010-UBR

Straight Base
U-Bar

DESTACO®
Toggle Lock
Plus



2010-SBR^①

Straight Base
Solid Bar

DESTACO®
Toggle Lock
Plus

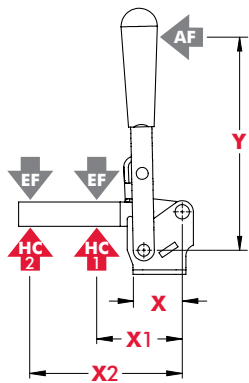


Technical Information

Model	Max. Holding Capacity	Clamp Bar Opening (+10°)	Handle Opening (+10°)	Weight	Accessories (Supplied)		
					Bolt Retainer	Spindle Assembly	Flanged Washers
2010-U	6230 N [1400 lbf]	78°	66°	1,16kg [2.56lbs]	---	240208-M	235106
2010-S					2010115-E	---	---
2010-UB					---	240208-M	235106
2010-SB					2010115-E	---	---
2010-UR					---	240208-M	235106
2010-SR ^①					2010115-E	---	---
2010-UBR					---	240208-M	235106
2010-SBR ^①					2010115-E	---	---

^① This item is available upon request

Vertical Hold Down Clamps | Holding Capacities

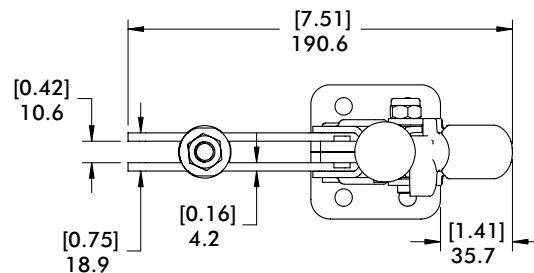


Model	X	X1	X2	Y	±HC1	±HC2	±EF(X1):AF	±EF(X2):AF
2010-()	[2.04] 51,8	[2.44] 62	[4.88] 124	[7.00] 178	[1400lbf.] 6230N	[720lbf.] 3200N	13:1	6:1

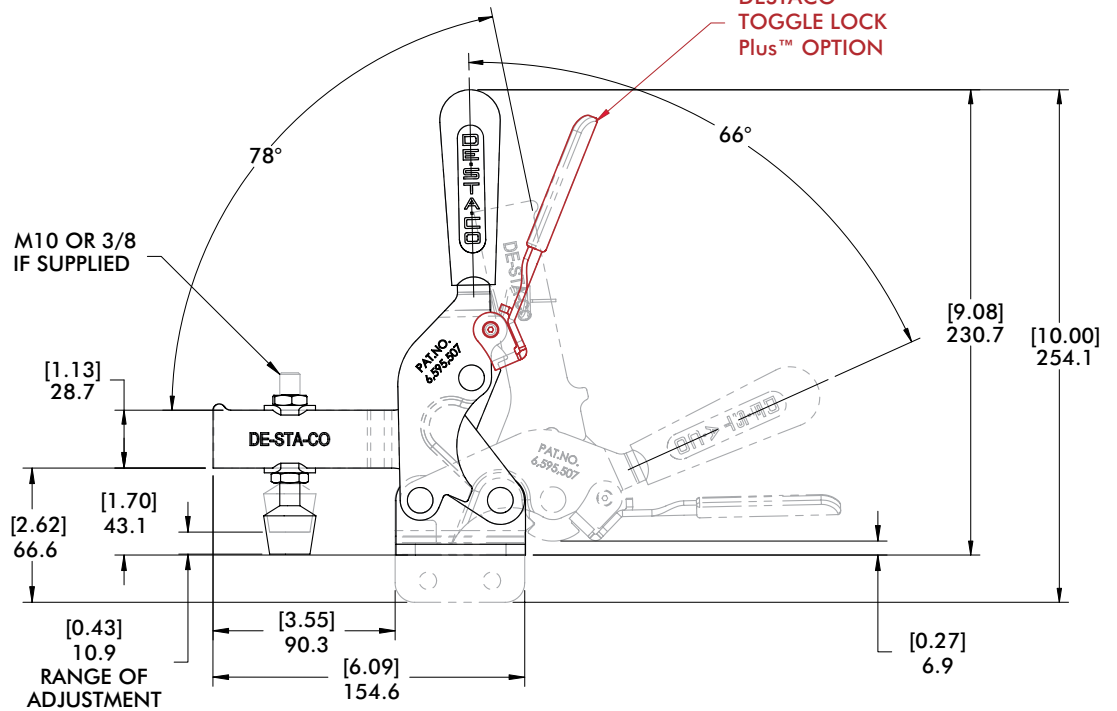
Dimensions shown "mm [inch]" **± HC** = Holding Capacity, **EF** = Exerting Force, **AF** = Applied Force
See page MC-TEC-4 for additional information.

Dimensions | -U/-S/-UB/-SB/-UR/-SR/-UBR/-SBR

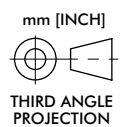
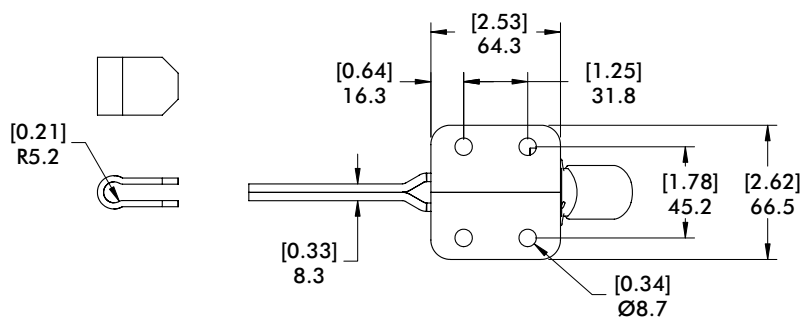
2010-U
Flanged Base
U-Bar



DESTACO®
TOGGLE LOCK
Plus™ OPTION



2010-SB
Straight Base
Solid Bar



mm [INCH]
THIRD ANGLE
PROJECTION