

# 84A3-3 SERIES (FIXED LOWER JAW)

Cam Type Sheet Metal Grippers | Ordering Information

## Fixed Lower & 90° Jaw

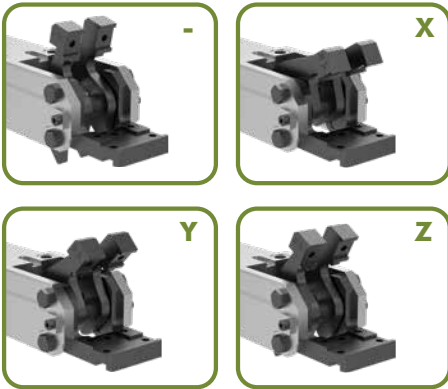
## Sensors, Gripper Teeth & Mounting (See next page)

84A3 - 31 D5 S SF SB - T High Temperature

### Jaw Opening Options

#### Description

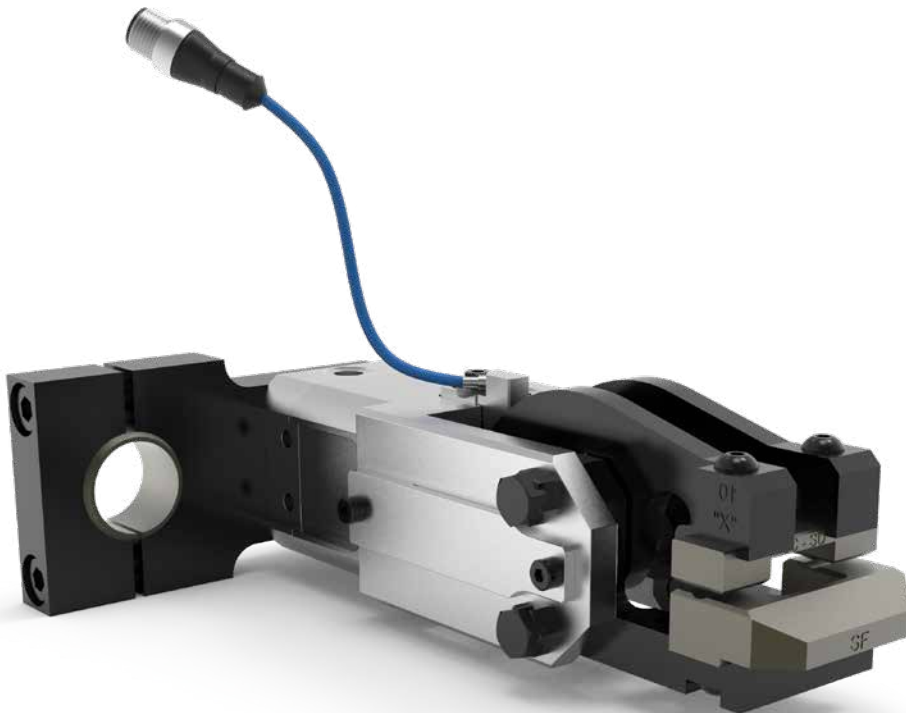
- 76° Jaw Opening (Standard)
- X 30° Jaw Opening
- Y 45° Jaw Opening
- Z 60° Jaw Opening



### Jaw Arrangement Options

#### Description

- 30 Double Upper, Straight Design, Drop Jaw
- 31 Double Upper, Straight Design
- 32 Double Upper, 90° Design
- 34 Single Upper, Right, Straight Design
- 35 Double Upper, Narrow Jaw, Straight Design
- 36 Double Upper, Extended Jaw
- 37 Double Upper, 90° Design
- 38 Double Upper, Narrow Jaw, 90° Design
- 39 Single Upper, Left, Straight Design



| Specifications                             | Unit |     |
|--|------|-----|
| Piston                                     | mm   | 32  |
| Actuation Time (open/close)                | sec  | 0,2 |
| Air Consumption per Double Stroke at 5 bar | L    | 0,4 |

# 84A3-3 SERIES (FIXED LOWER JAW)

## Cam Type Sheet Metal Grippers | Ordering Information

### Gripper Teeth, Points and Crown Options (Upper and Lower)

#### Steel Teeth

- 00** None
- AA** 14,9x21x12mm - 8JZ-014-3
- AH** 14,9x14x14mm - 8JZ-001-1
- AL** 14,9x14,9x9,8mm - 8JZ-003-1
- AC** 14,9x14x12mm - 8JZ-043-1
- AG** 14,9x14x12mm - 8JZ-050-1
- BK** 14,9x21x11mm - 8JZ-066-1



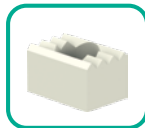
#### High Temperature

- AS** 8JZ-094-1



#### Plastic Teeth\*

- 00** None
  - KA** 8JZ-021-1
  - KC** 8JZ-023-1 (Upper)
- \*Not suitable for High Temperature applications



Shims for gripper teeth available  
Order Separately **8SB-003-1**  
Dimensions: 14,8 x 13 x 0,15 mm

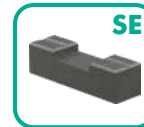
#### Steel Points (Upper only)

- 00** None
- PA** 8MJ-1001-1
- PB** 8MJ-1002-1
- PC** 8MJ-1003-1



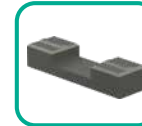
#### Crown Teeth - Concave (Lower Only)

- 00** None
- SE** 8JZ-019-1  
(Not for use with A8 and GN Sensor)
- SF** 8JZ-020-3
- SH** 8JZ-048-1



#### Crown Teeth - Convex (Upper Only)

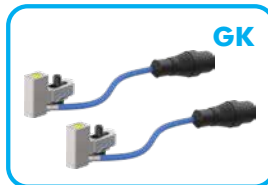
- SB** Mat. = 0,5-1mm - 8JZ-016-2
- SD** Mat. = 1-1,5mm - 8JZ-018-2



### Sensor Options (not suitable for High Temperature applications)

#### Description

- 00** None
- KL** Position Control Set, Left for 76° Opening Angle - 8EA-022-4
- KR** Position Control Set, Right for 76° Opening Angle - 8EA-022-4
- A8** Workpiece Control, Switching Distance 7mm  
8EA-092-1 (for 84A3-30/31/32/36)
- D5** Double Sheet Control, M12x1 Plug - 8EA-087-1
- GK** 2X **D5**
- GN** 1X **A8** + 1X **D5** (for 84A3-30/31/32/36 only)



Shims for Sensor A8 available  
Order Separately **8MB-003-1**



Cable support for Sensing Systems **A8**  
Order Separately **8MA-175-1**  
Mounted on lower side of gripper (for 84A3-31/36 only)

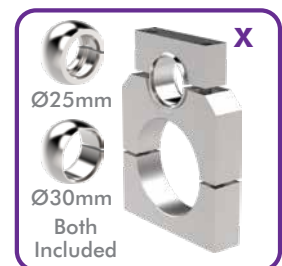


Cover for Sensing Systems **D5, GK, GN**  
Order Separately **82ZB-185-1**

### Mounting Options

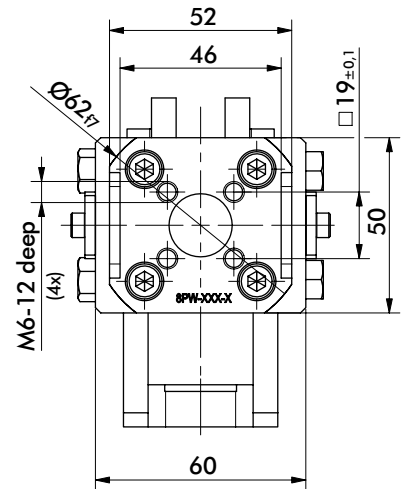
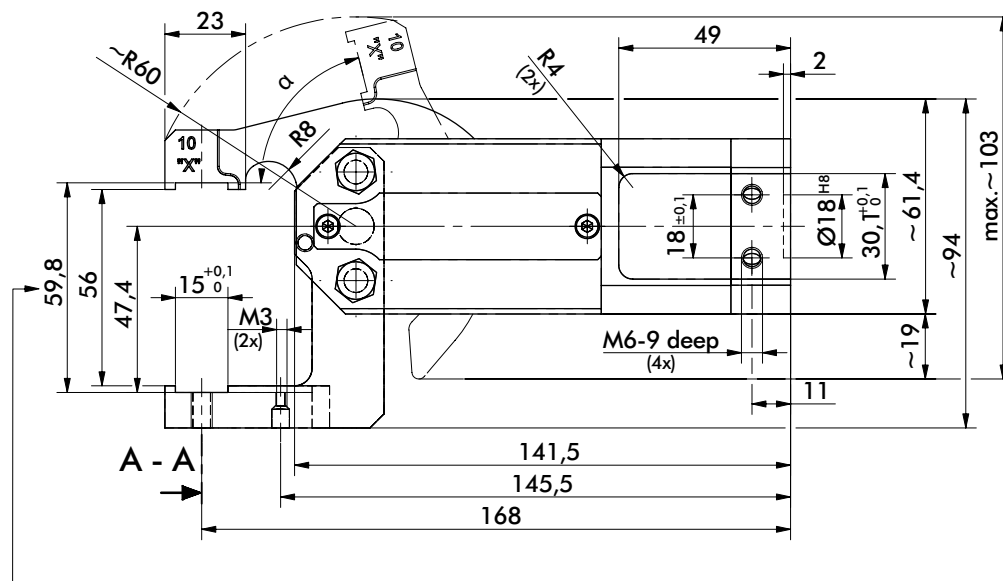
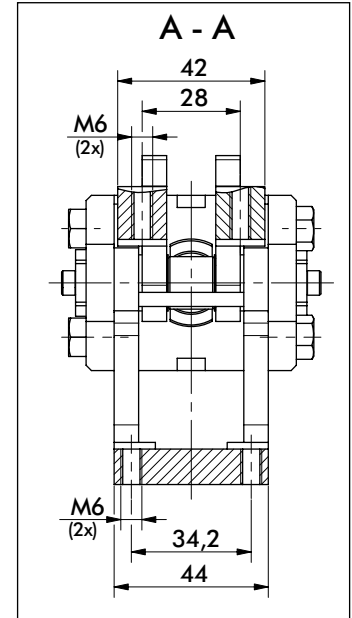
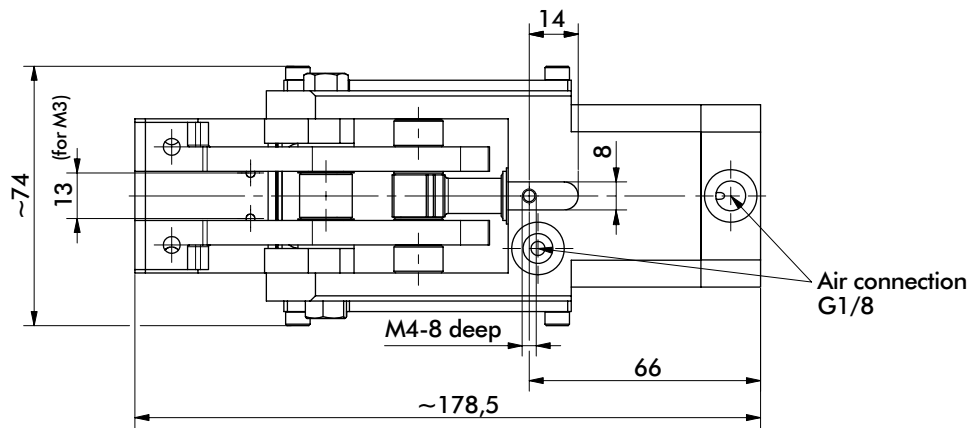
#### Description

- 0** None
- A** Rear Flange - 8MA-006-1
- 3** Rear Flange - 8MA-273-1
- R** Guards - 8MH-046-1  
(for 84A3-31/34/35/39 only)
- S** Rear Swivel Ball - 82ZB-007-1
- X** On-Body Swivel Ball  
82ZB-033-2



# 84A3.30 SERIES (FIXED LOWER JAW)

Cam Type Sheet Metal Grippers | Dimensions and Technical Specifications



Addition of gripper teeth height and thickness of the clamped plate must be 59,8 mm. It might be necessary to use shim plates or to grind off the gripper teeth.

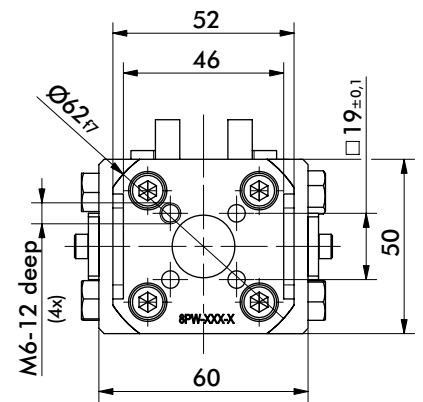
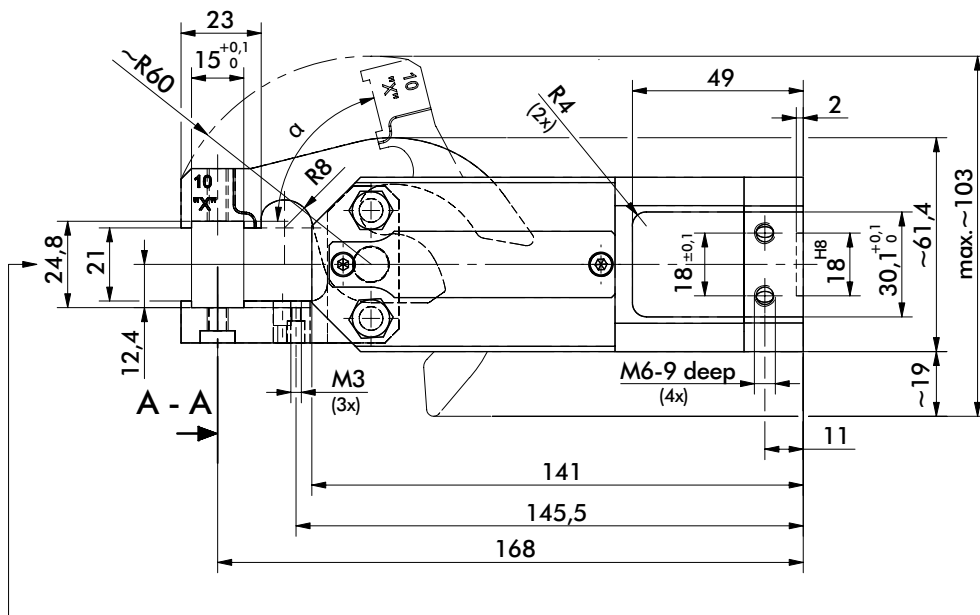
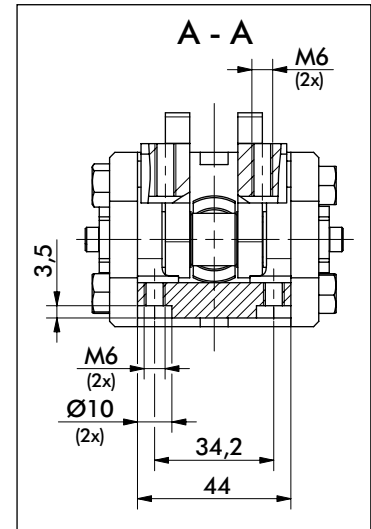
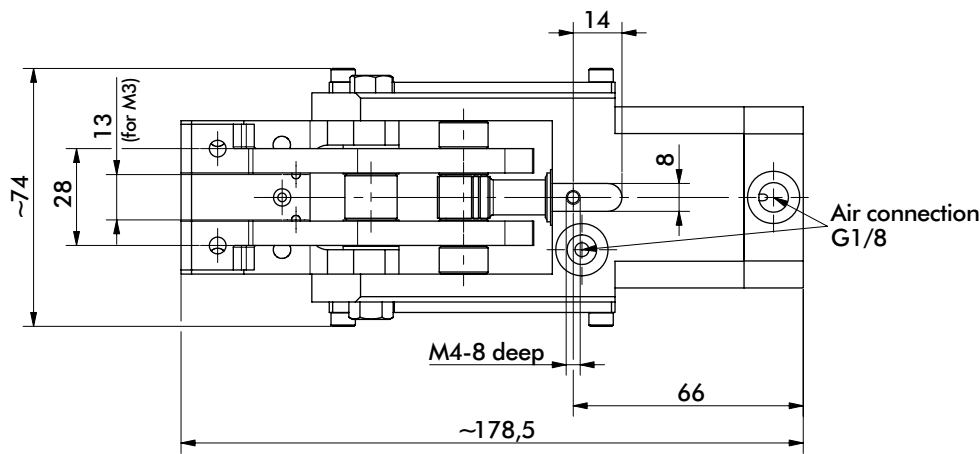
Medium air, max. 6 bar. Operation with oil-free air is permissible.

NOTE! Any extension of the moveable or fixed gripper jaws as well as the additional attachment of weights will void warranty.

| Model<br>84A3.30 | Opening Angle $\alpha$ | Clamping force at 5 bar<br>~N [lbs] | Weight<br>Kg [lbs] |
|------------------|------------------------|-------------------------------------|--------------------|
| -                | 76°                    | 1500 [337]                          | 1,4 [3.09]         |
| X                | 30°                    |                                     |                    |
| Y                | 45°                    |                                     |                    |
| Z                | 60°                    |                                     |                    |

# 84A3.31 SERIES (FIXED LOWER JAW)

Cam Type Sheet Metal Grippers | Dimensions and Technical Specifications



Addition of gripper teeth height and thickness of the clamped plate must be 24,8 mm. It might be necessary to use shim plates or to grind off the gripper teeth.

Medium air, max. 6 bar. Operation with oil-free air is permissible.

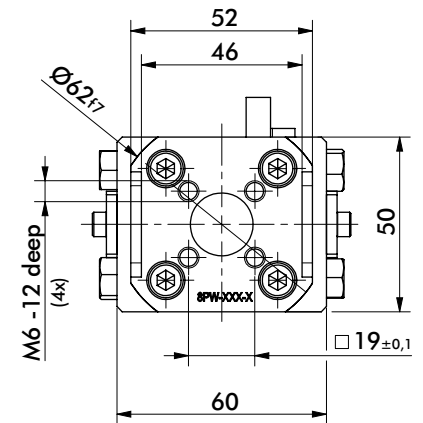
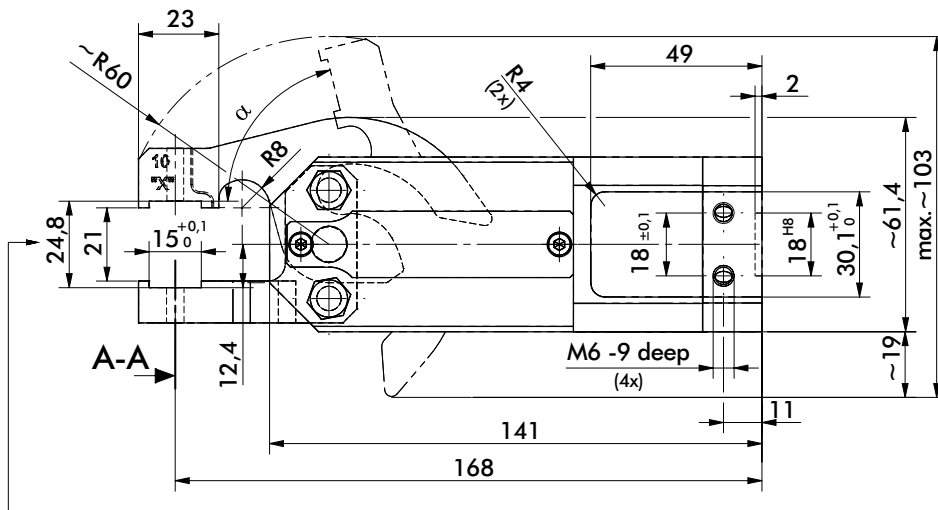
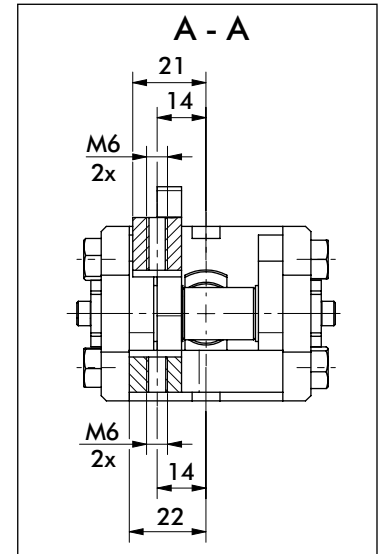
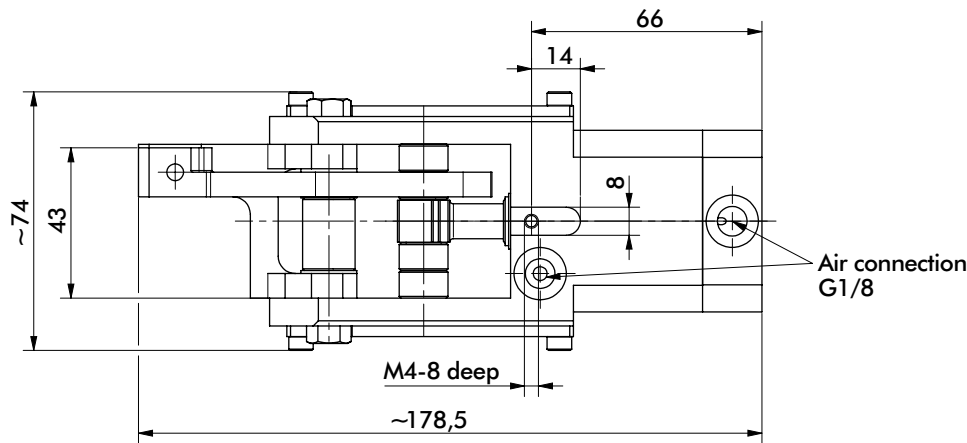
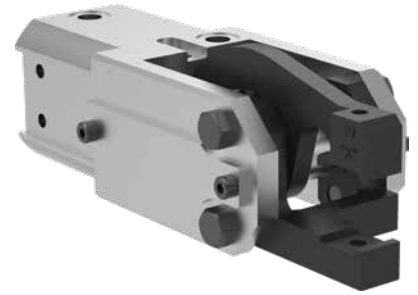
NOTE! Any extension of the moveable or fixed gripper jaws as well as the additional attachment of weights will void warranty.

| Model<br>84A3.31 | Opening Angle $\alpha$ | Clamping force at 5 bar<br>~N [lbs] | Weight<br>Kg [lbs] |
|------------------|------------------------|-------------------------------------|--------------------|
| -                | 76°                    | 1500 [337]                          | 1,3 [2.87]         |
| X                | 30°                    |                                     |                    |
| Y                | 45°                    |                                     |                    |
| Z                | 60°                    |                                     |                    |



# 84A3.34 SERIES (FIXED LOWER JAW)

Cam Type Sheet Metal Grippers | Dimensions and Technical Specifications



Addition of gripper teeth height and thickness of the clamped plate must be 24,8 mm. It might be necessary to use shim plates or to grind off the gripper teeth.

Medium air, max. 6 bar. Operation with oil-free air is permissible.

NOTE! Any extension of the moveable or fixed gripper jaws as well as the additional attachment of weights will void warranty.

| Model<br>84A3.34 | Opening Angle $\alpha$ | Clamping force at 5 bar<br>~N [lbs] | Weight<br>Kg [lbs] |
|------------------|------------------------|-------------------------------------|--------------------|
| -                | 76°                    | 1500 [337]                          | 1,3 [2.87]         |
| X                | 30°                    |                                     |                    |
| Y                | 45°                    |                                     |                    |
| Z                | 60°                    |                                     |                    |

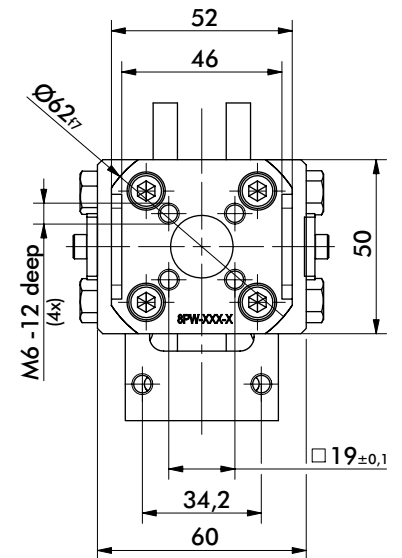
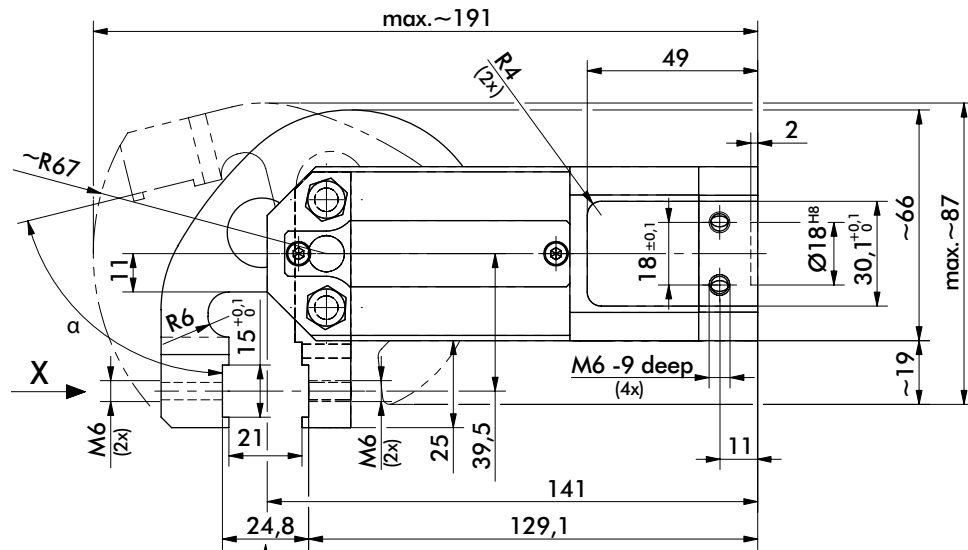
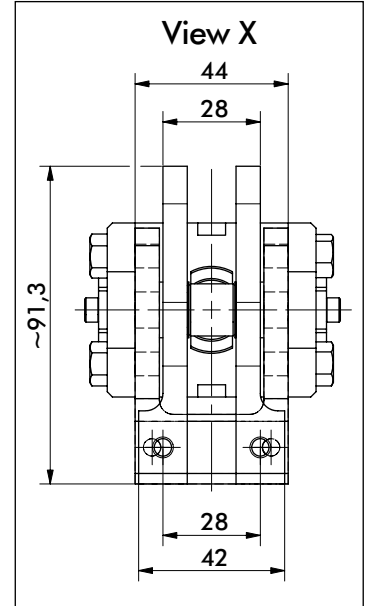
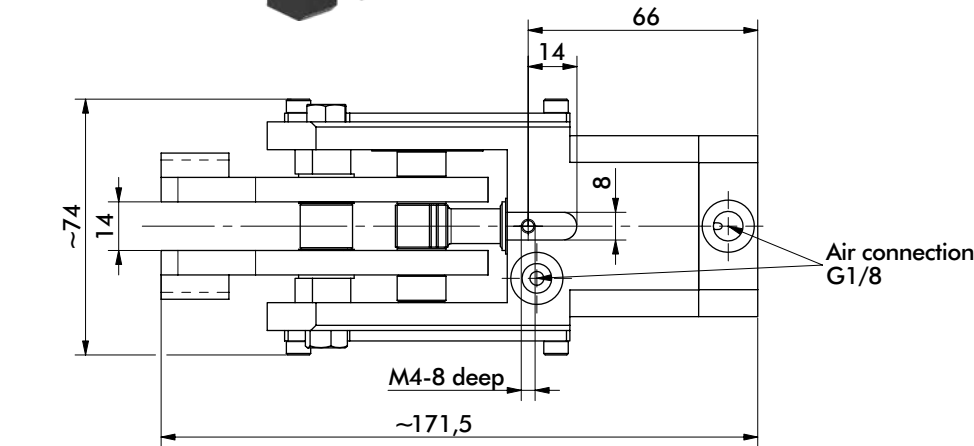






# 84A3.37 SERIES (FIXED LOWER JAW)

Cam Type Sheet Metal Grippers | Dimensions and Technical Specifications



Addition of gripper teeth height and thickness of the clamped plate must be 24,8 mm. It might be necessary to use shim plates or to grind off the gripper teeth.

Medium air, max. 6 bar. Operation with oil-free air is permissible.

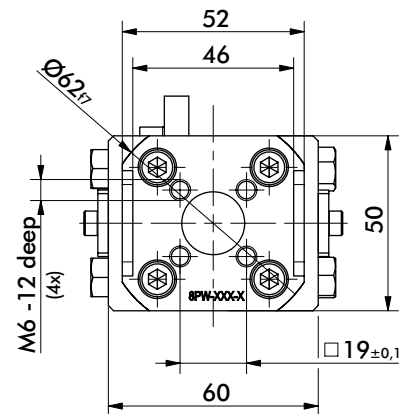
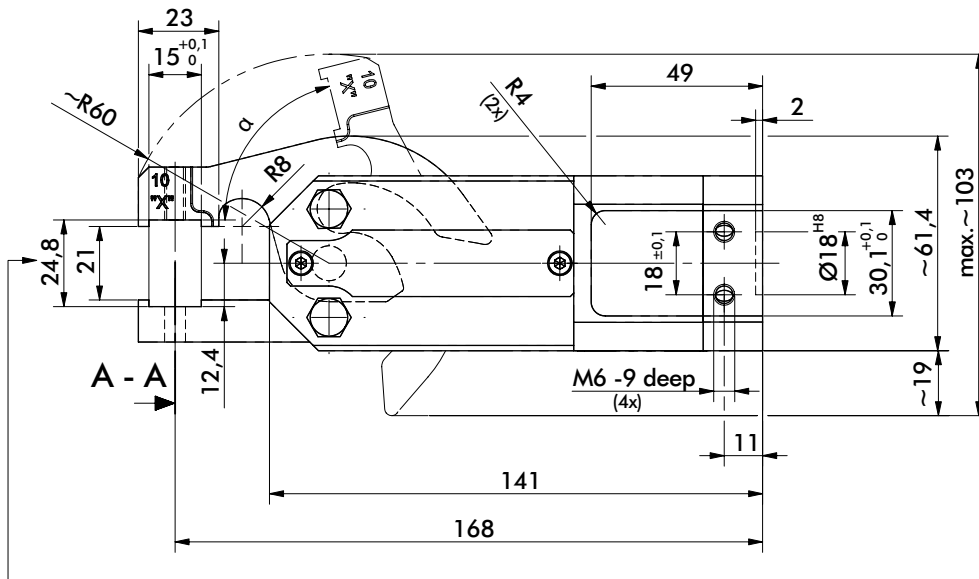
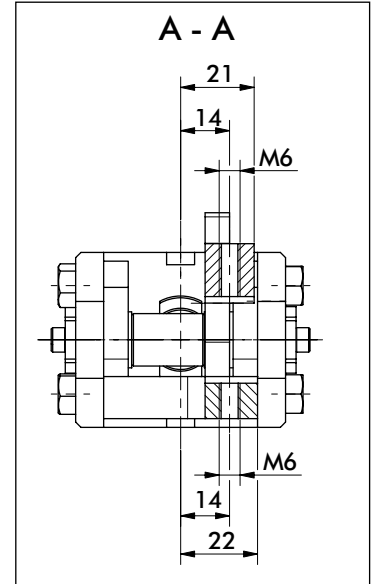
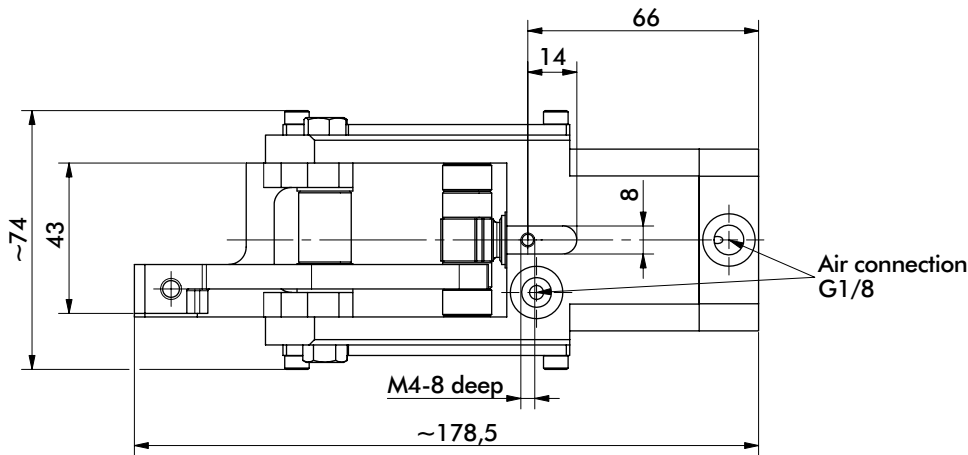
NOTE! Any extension of the moveable or fixed gripper jaws as well as the additional attachment of weights will void warranty.

| Model<br>84A3.37 | Opening Angle $\alpha$ | Clamping force at 5 bar<br>~N [lbs] | Weight<br>Kg [lbs] |
|------------------|------------------------|-------------------------------------|--------------------|
| -                | 76°                    | 1600 [360]                          | 1,45 [3.20]        |
| X                | 30°                    |                                     |                    |
| Y                | 45°                    |                                     |                    |
| Z                | 60°                    |                                     |                    |



# 84A3.39 SERIES (FIXED LOWER JAW)

Cam Type Sheet Metal Grippers | Dimensions and Technical Specifications



Addition of gripper teeth height and thickness of the clamped plate must be 24,8 mm. It might be necessary to use shim plates or to grind off the gripper teeth.

Medium air, max. 6 bar. Operation with oil-free air is permissible.

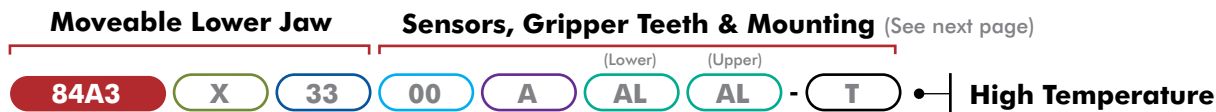
NOTE! Any extension of the moveable or fixed gripper jaws as well as the additional attachment of weights will void warranty.

| Model<br>84A3.39 | Opening Angle $\alpha$ | Clamping force at 5 bar<br>~N [lbs] | Weight<br>Kg [lbs] |
|------------------|------------------------|-------------------------------------|--------------------|
| -                | 76°                    | 1500 [337]                          | 1,3 [2.87]         |
| X                | 30°                    |                                     |                    |
| Y                | 45°                    |                                     |                    |
| Z                | 60°                    |                                     |                    |



# 84A3-3 SERIES (MOVEABLE LOWER JAWS)

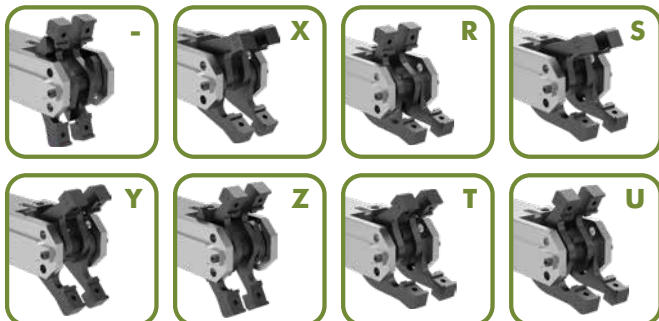
Cam Type Sheet Metal Grippers | Ordering Information



## Jaw Opening Options

### Description

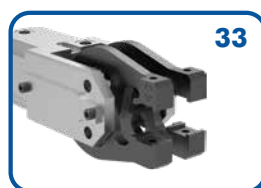
- 76° Jaw Opening (Symmetrical)      **R** 76° Upper/15° Lower Jaw
- X** 30° Jaw Opening (Symmetrical)      **S** 30° Upper/15° Lower Jaw
- Y** 45° Jaw Opening (Symmetrical)      **T** 45° Upper/15° Lower Jaw
- Z** 60° Jaw Opening (Symmetrical)      **U** 60° Upper/15° Lower Jaw



## Jaw Arrangement Options

### Description

- 33** Double Symmetrical, Straight Design -or- 15° Lower, Double Upper, Straight Design



| Specifications                             | Unit |     |
|--|------|-----|
| Piston                                     | mm   | 32  |
| Actuation Time (open/close)                | sec  | 0.2 |
| Air Consumption per Double Stroke at 5 bar | L    | 0.4 |

# 84A3-3 SERIES (MOVEABLE LOWER JAWS)

## Cam Type Sheet Metal Grippers | Ordering Information

### Gripper Teeth, Points and Crown Options (Upper and Lower)

#### Steel Teeth

- 00** None
- AA** 14,9x21x12mm - 8JZ-014-3
- AH** 14,9x14x14mm - 8JZ-001-1
- AL** 14,9x14,9x9,8mm - 8JZ-003-1
- AC** 14,9x14x12mm - 8JZ-043-1
- AG** 14,9x14x12mm - 8JZ-050-1
- BK** 14,9x21x11mm - 8JZ-066-1



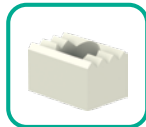
#### High Temperature

- AS** 8JZ-094-1



#### Plastic Teeth\*

- 00** None
  - KA** 8JZ-021-1
  - KC** 8JZ-023-1 (Upper)
- \*Not suitable for High Temperature applications



Shims for gripper teeth available  
Order Separately **8SB-003-1**  
Dimensions: 14,8 x 13 x 0,15 mm

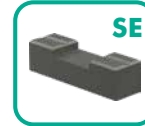
#### Steel Points (Upper only)

- 00** None
- PA** 8MJ-1001-1
- PB** 8MJ-1002-1
- PC** 8MJ-1003-1



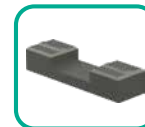
#### Crown Teeth - Concave (Lower Only)

- 00** None
- SE** 8JZ-019-1
- SF** 8JZ-020-3
- SH** 8JZ-048-1



#### Crown Teeth - Convex (Upper Only)

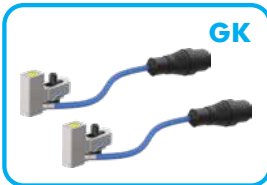
- SB** Mat. = 0,5-1mm - 8JZ-016-2
- SD** Mat. = 1-1,5mm - 8JZ-018-2



### Sensor Options (not suitable for High Temperature applications)

#### Description

- 00** None
- KL** Position Control Set, Left for 76° Opening Angle - 8EA-022-4
- KR** Position Control Set, Right for 76° Opening Angle - 8EA-022-4
- D5** Double Sheet Control, M12x1 Plug - 8EA-087-1
- GK** 2X D5

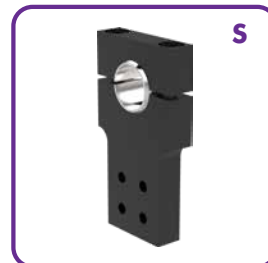


Cover for Sensing Systems **D5, GK**  
Order Separately **82ZB-185-1**

### Mounting Options

#### Description

- 0** None
- A** Rear Flange - 8MA-006-1
- 3** Rear Flange - 8MA-273-1
- S** Rear Swivel Ball - 82ZB-007-1
- X** On-Body Swivel Ball 82ZB-033-2





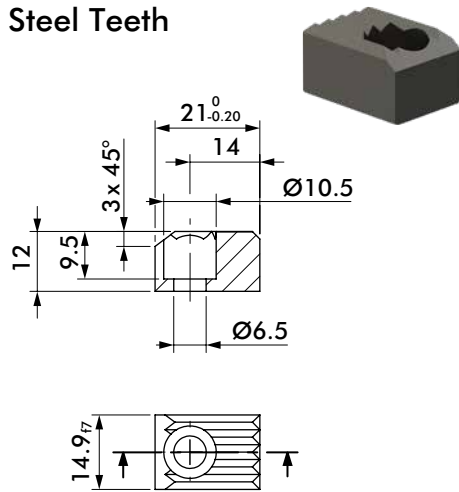




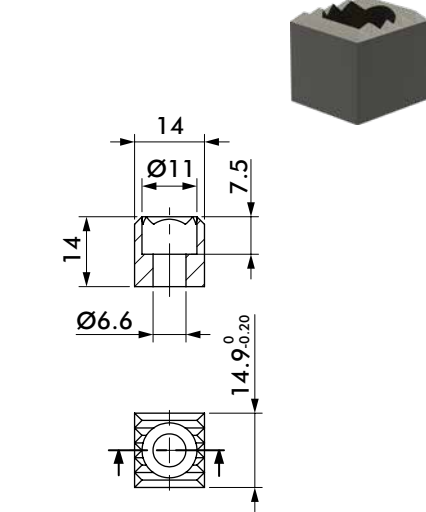
# 84A3 SERIES ACCESSORIES

## Cam Type Sheet Metal Grippers | Dimensions and Ordering Information

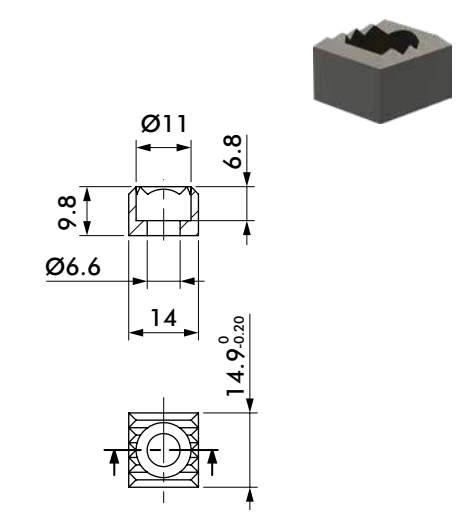
### Steel Teeth



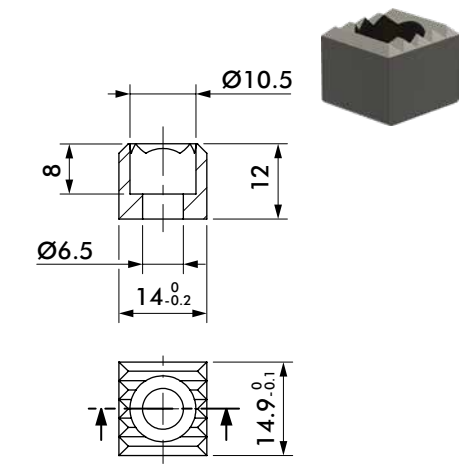
**Steel Teeth** Part Number **8JZ-014-3**  
Serrated



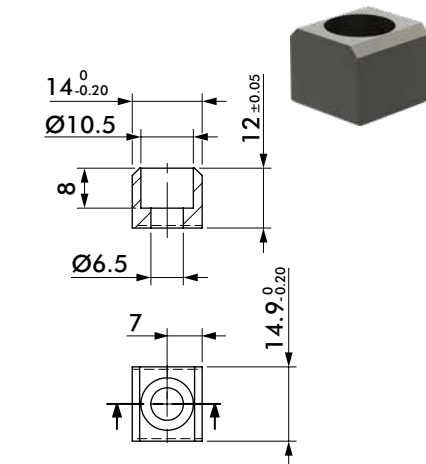
**Steel Teeth** Part Number **8JZ-001-1**  
Serrated



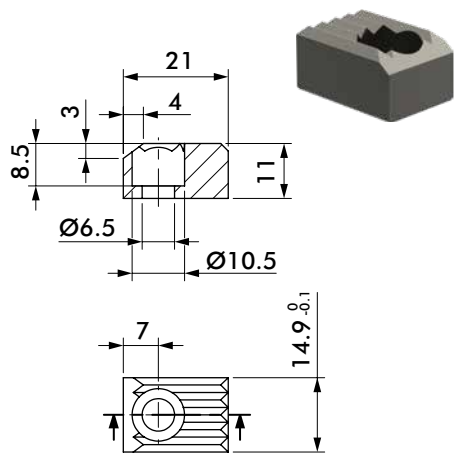
**Steel Teeth** Part Number **8JZ-003-1**  
Serrated



**Steel Teeth** Part Number **8JZ-043-1**  
Serrated

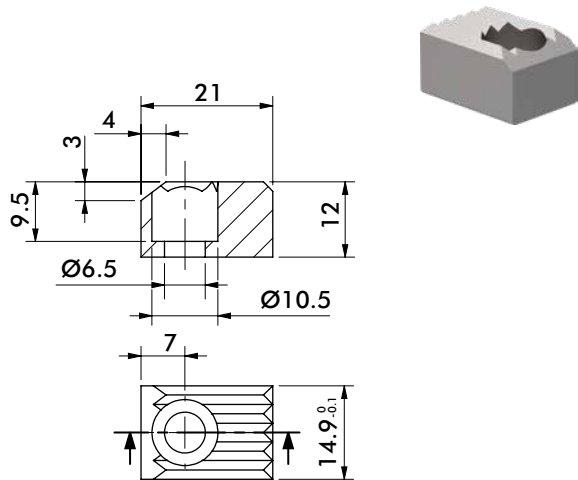


**Steel Teeth** Part Number **8JZ-050-1**  
Flat



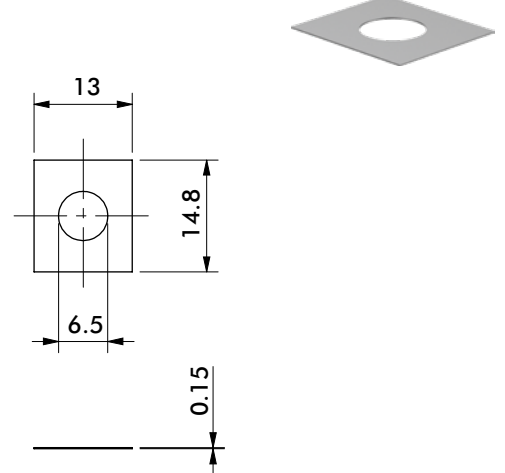
**Steel Teeth** Part Number **8JZ-066-1**  
Serrated

### High Temperature Steel Teeth



**Steel Teeth** Part Number **8JZ-094-1**  
High Temperature, Serrated

### Shims

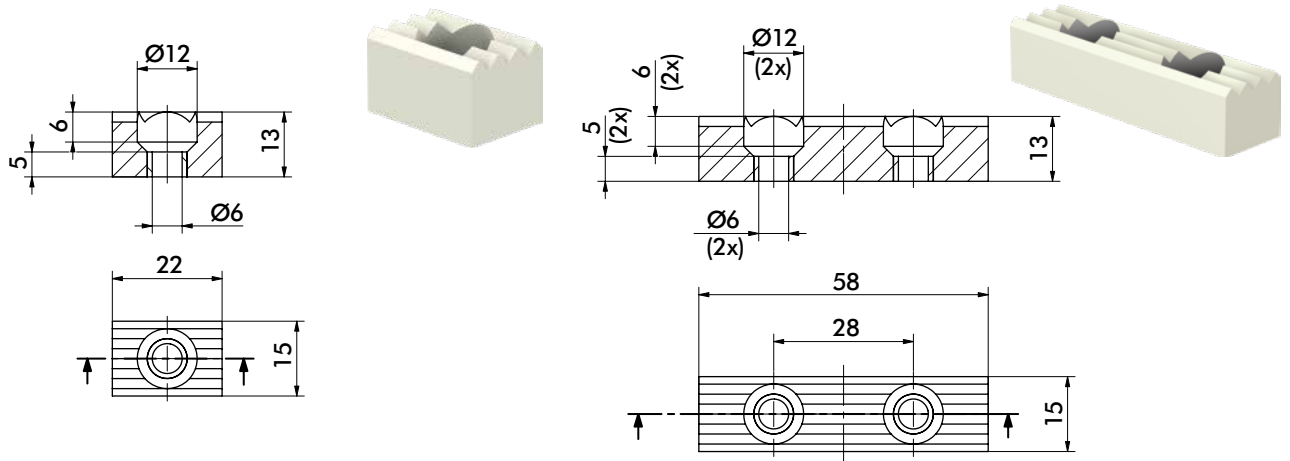


**Shims** Part Number **8SB-003-1**  
Shims for Gripper Teeth

# 84A3 SERIES ACCESSORIES

## Cam Type Sheet Metal Grippers | Dimensions and Ordering Information

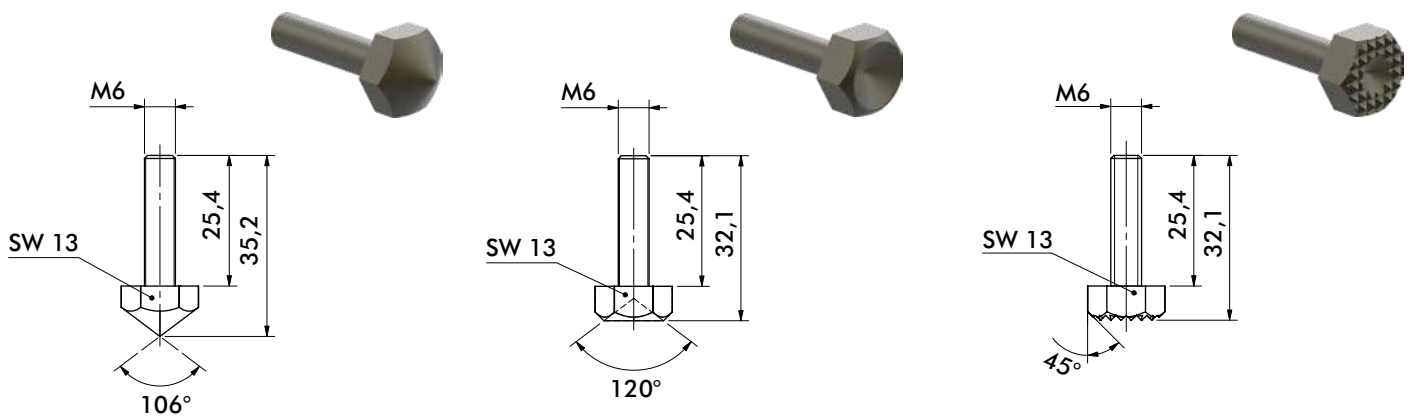
### Plastic Teeth



**Plastic Teeth** Part Number  
90 Shore, Serrated **8JZ-021-1**

**Plastic Teeth** Part Number  
90 Shore, Serrated (Upper) **8JZ-023-1**

### Steel Points

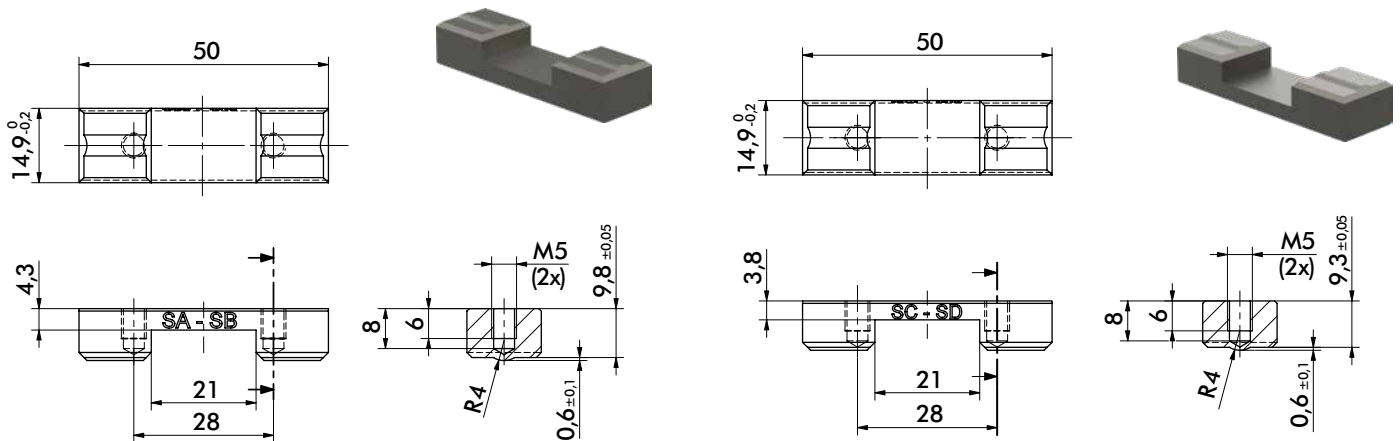


**Steel Point** Part Number  
Pointed **8MJ-1001-1**

**Steel Point** Part Number  
Flat **8MJ-1002-1**

**Steel Point** Part Number  
Serrated **8MJ-1003-1**

### Crown Teeth - Upper



For material thickness 0,5 - 1,0 mm

For material thickness 1,0 - 1,5 mm

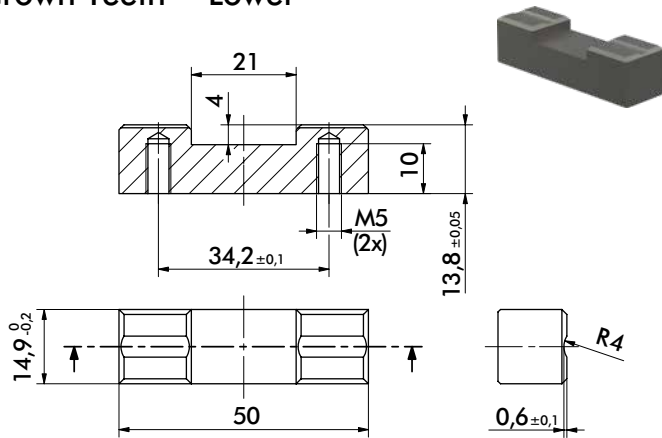
**Crown Teeth** Part Number  
Convex **8JZ-016-2**

**Crown Teeth** Part Number  
Convex **8JZ-018-2**

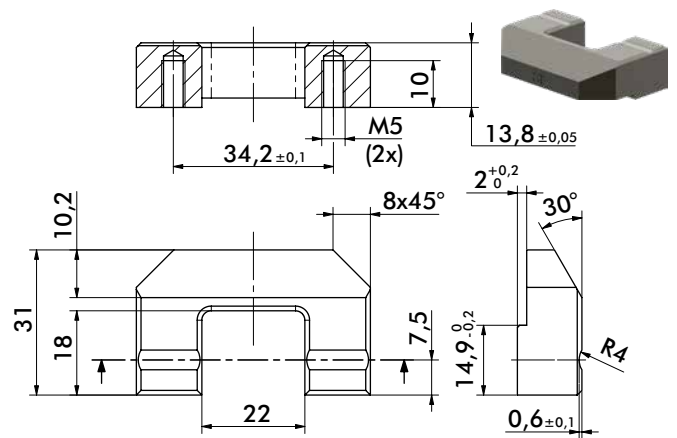
# 84A3 SERIES ACCESSORIES

## Cam Type Sheet Metal Grippers | Dimensions and Ordering Information

### Crown Teeth - Lower

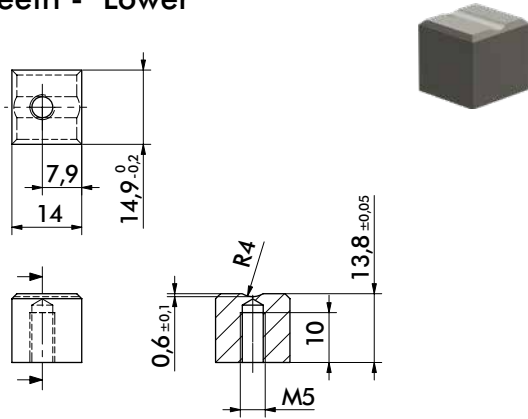


**Crown Teeth** Part Number **8JZ-019-1**  
Concave



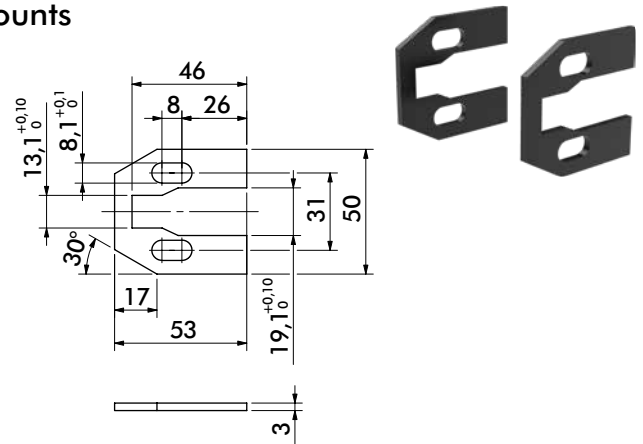
**Crown Teeth** Part Number **8JZ-020-3**  
Concave

### Crown Teeth - Lower



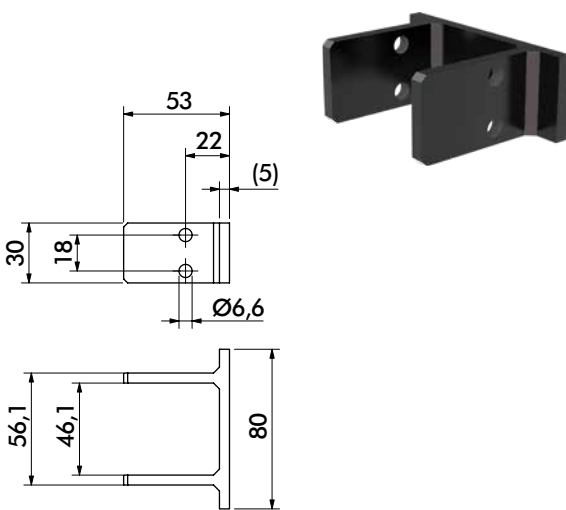
**Crown Teeth** Part Number **8JZ-048-1**  
Concave

### Mounts

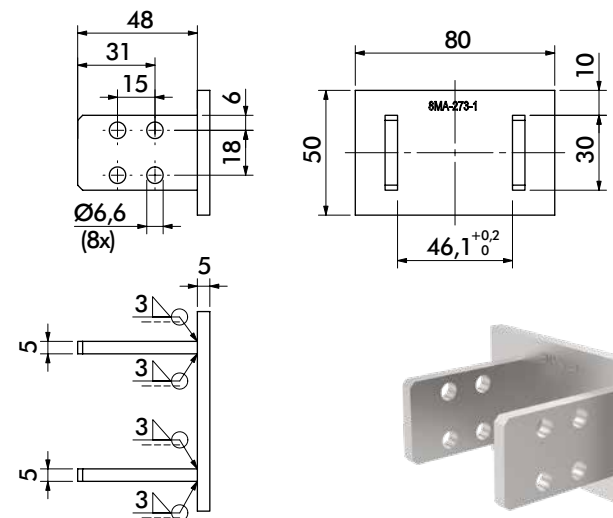


**Mount** Part Number **8MH-046-1**  
Guards

### Mounts



**Mount** Part Number **8MA-006-1**  
Rear Flange

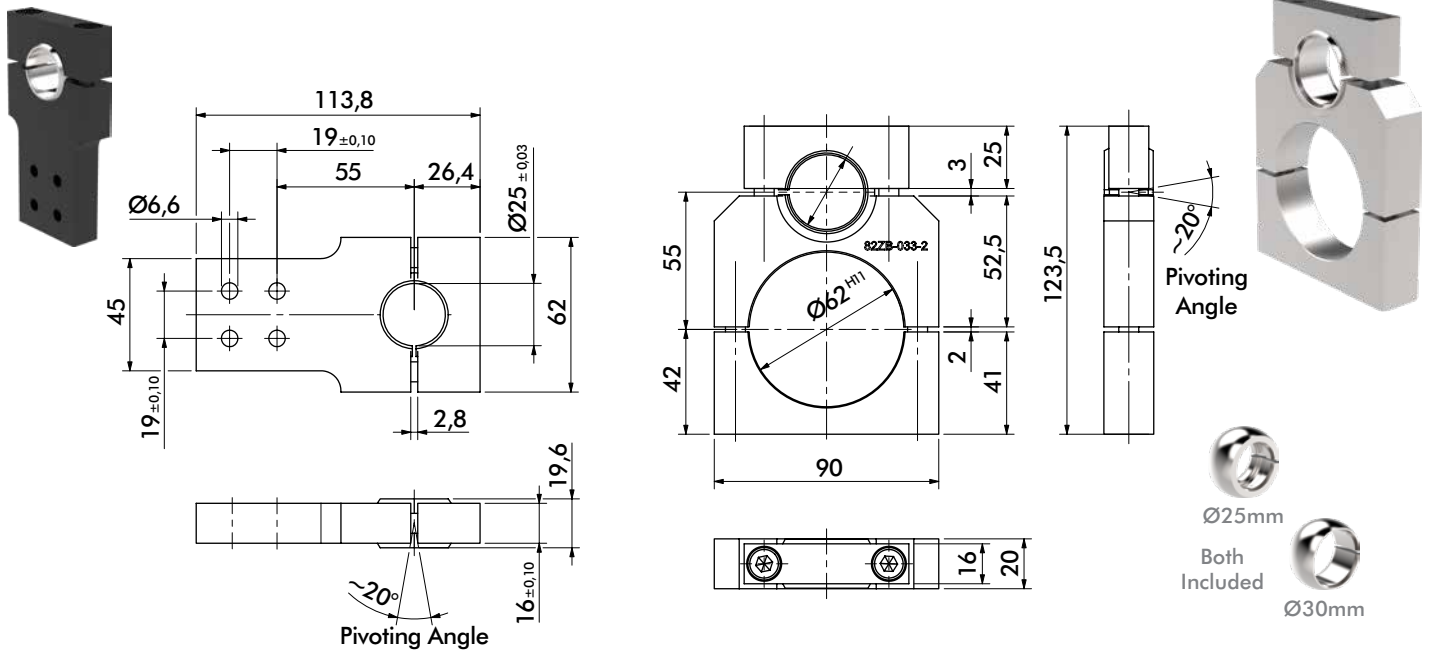


**Mount** Part Number **8MA-273-1**  
Rear Flange

# 84A3 SERIES ACCESSORIES

## Cam Type Sheet Metal Grippers | Dimensions and Ordering Information

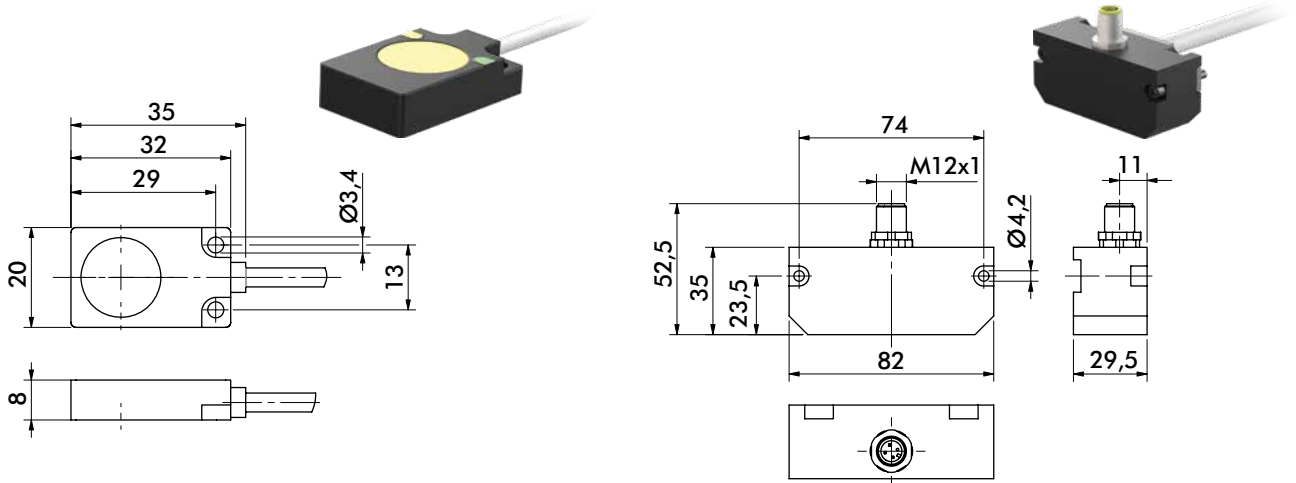
### Mounts



**Mount** **Part Number**  
Rear Swivel Ball **82ZB-007-1**

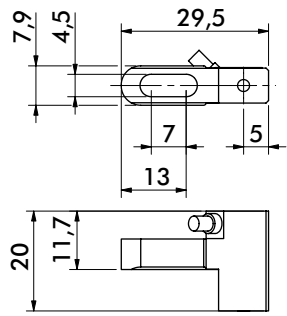
**Mount** **Part Number**  
On-Body Swivel Ball **82ZB-033-2**

### Sensors



**Workpiece Control Sensor** **Part Number**  
7mm Sensing Distance, 2m Cable **8EA-092-1**

**Position Control Set Sensor** **Part Number**  
For 76° Opening Angle Only **8EA-022-4**



**Double Sheet Control Sensor** **Part Number**  
1.5mm Sensing Distance **8EA-087-1**