

84N1 SERIES

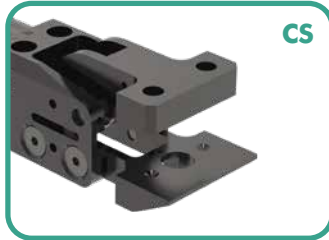
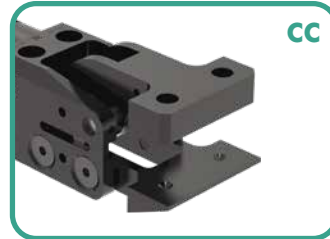
Accelerate® Press Room Sheet Metal Grippers | Ordering Information



Ports	Description
N	1/8 NPT
G	1/8 BSPP

Opening Angle	Description
030	30° Opening Angle
045	45° Opening Angle
060	60° Opening Angle
075	75° Opening Angle

Jaw Style/ Tip Mount	Description
FA	Fixed Lower 0° Jaw, Single Tip Mount
FC	Fixed Lower 0° Jaw, Double Tip Mount
CA	Fixed Lower Chisel Jaw, Single Tip Mount
CC	Fixed Lower Chisel Jaw, Double Tip Mount
CS	Fixed Lower Chisel Jaw, Double Tip w/Sensor Mount
PC	Fixed Lower 90° Jaw, Double Tip Mount



Specifications:

See page SG-PRG-8 for technical specifications.

Mounting options are ordered separately:

Please refer to mounting options on pages SG-PRG-5 to 6 for mounting style and part number.



84N1 SERIES

Accelerate® Press Room Sheet Metal Grippers | Ordering Information

Part Presence Detection

0
P
N

Description

None
PNP
NPN



4mm Sensing Range

Sheet Stops

0
1

Description

None
Included



Left Sensor Side Mount

Description

0 None
1 Dual Magneto-resistive PNP Sensors Left Side
2 Dual Magneto-resistive NPN Sensors Left Side
3 Infrared PNP Sensing (not available for PC jaw style)

Right Sensor Side Mount

Description

0 None
1 Dual Magneto-resistive PNP Sensors Right Side
2 Dual Magneto-resistive NPN Sensors Right Side
3 Infrared PNP Sensing (not available for PC jaw style)

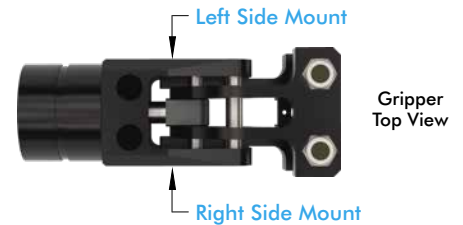


0.4 mm Double blank minimum per sheet thickness

Tips

Description

00 None
01 Serrated Tip (for all Jaw Styles except FA)
02 Serrated Tip (for FA Jaw Style only)
03 Point Tip
04 Peen Tip
05 Polyurethane Tip (Durometer 70A)



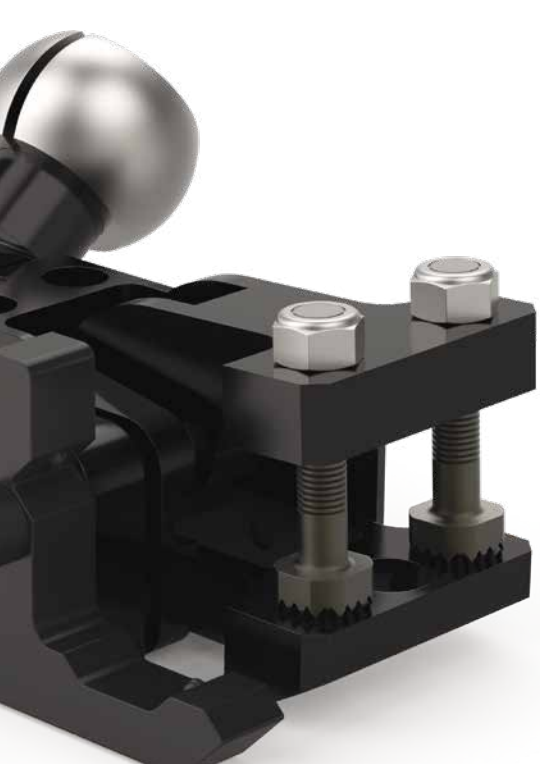
Gripper Top View



Description	Part Number	Single Tip Jaw	Double Tip Jaw
Polyurethane Tip	8JD-1005-1	Yes	Yes
Point Tip	8JD-1001-1	Yes*	Yes
Serrated Tip	8JD-1002-1	Yes*	Yes
Peen Tip	8JD-1003-1	Yes*	Yes
Serrated Notched Top (for Jaw Style FA only)	8JD-1004-1	Yes	No

*These options will work on single tip jaws but WILL activate the part present sensor which will result in a false positive if that option is used.

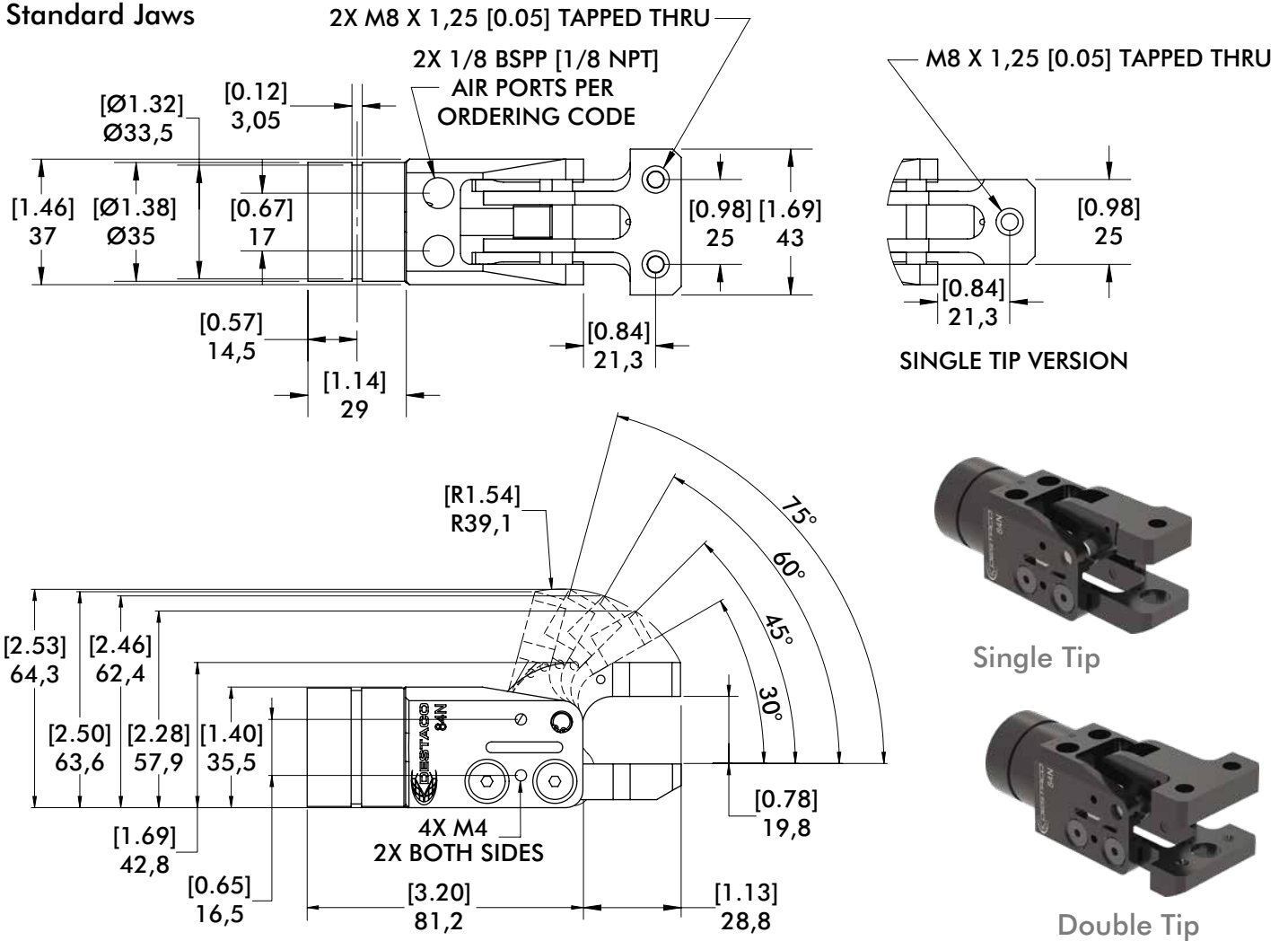
Customer is responsible for final adjustments and tightening of all accessory mounting screws.



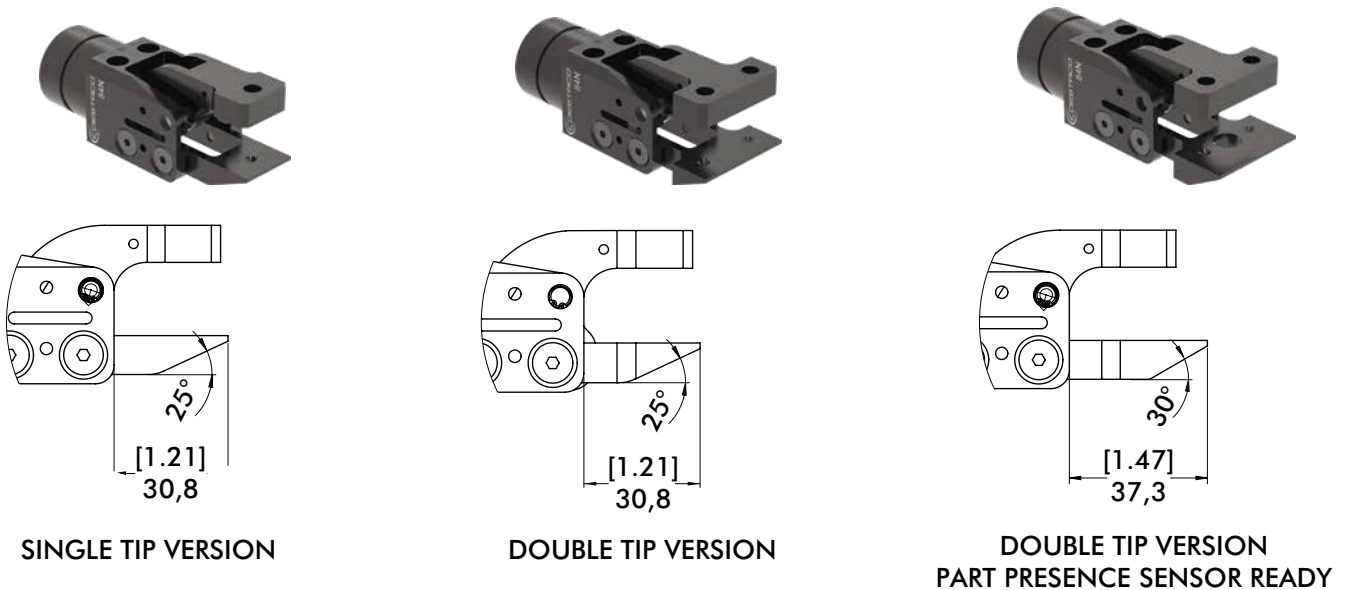
84N1 SERIES

Accelerate® Press Room Sheet Metal Grippers | Dimensions and Technical Specifications

Standard Jaws

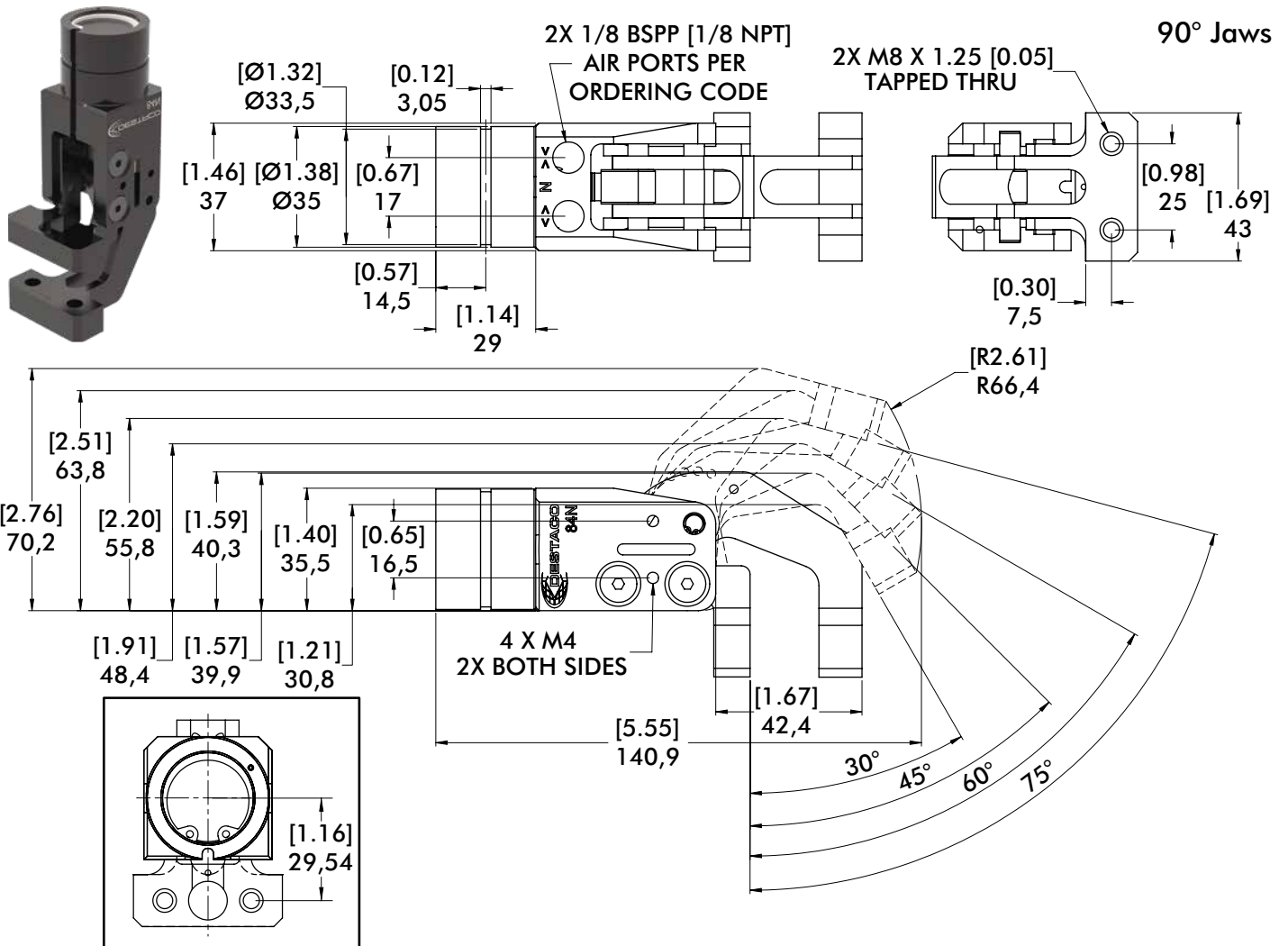


Chisel Jaws

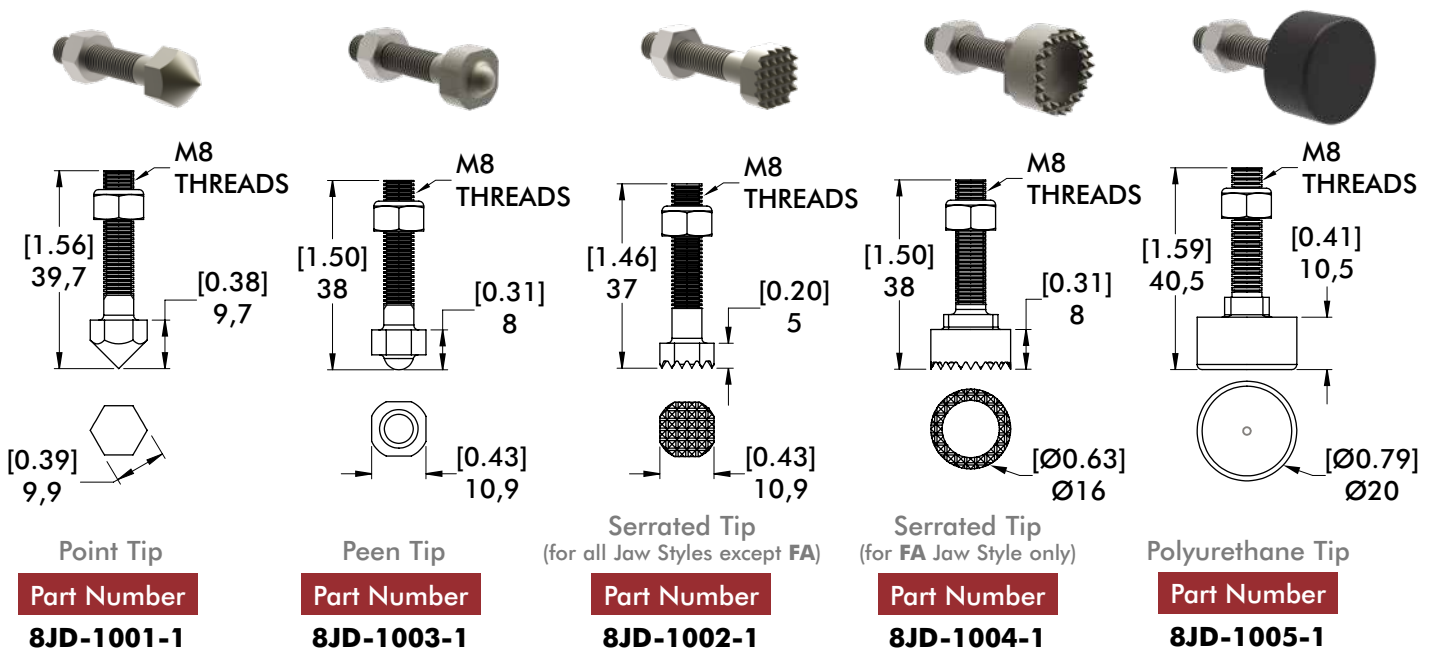


84N1 SERIES

Accelerate® Press Room Sheet Metal Grippers | Dimensions and Ordering Information



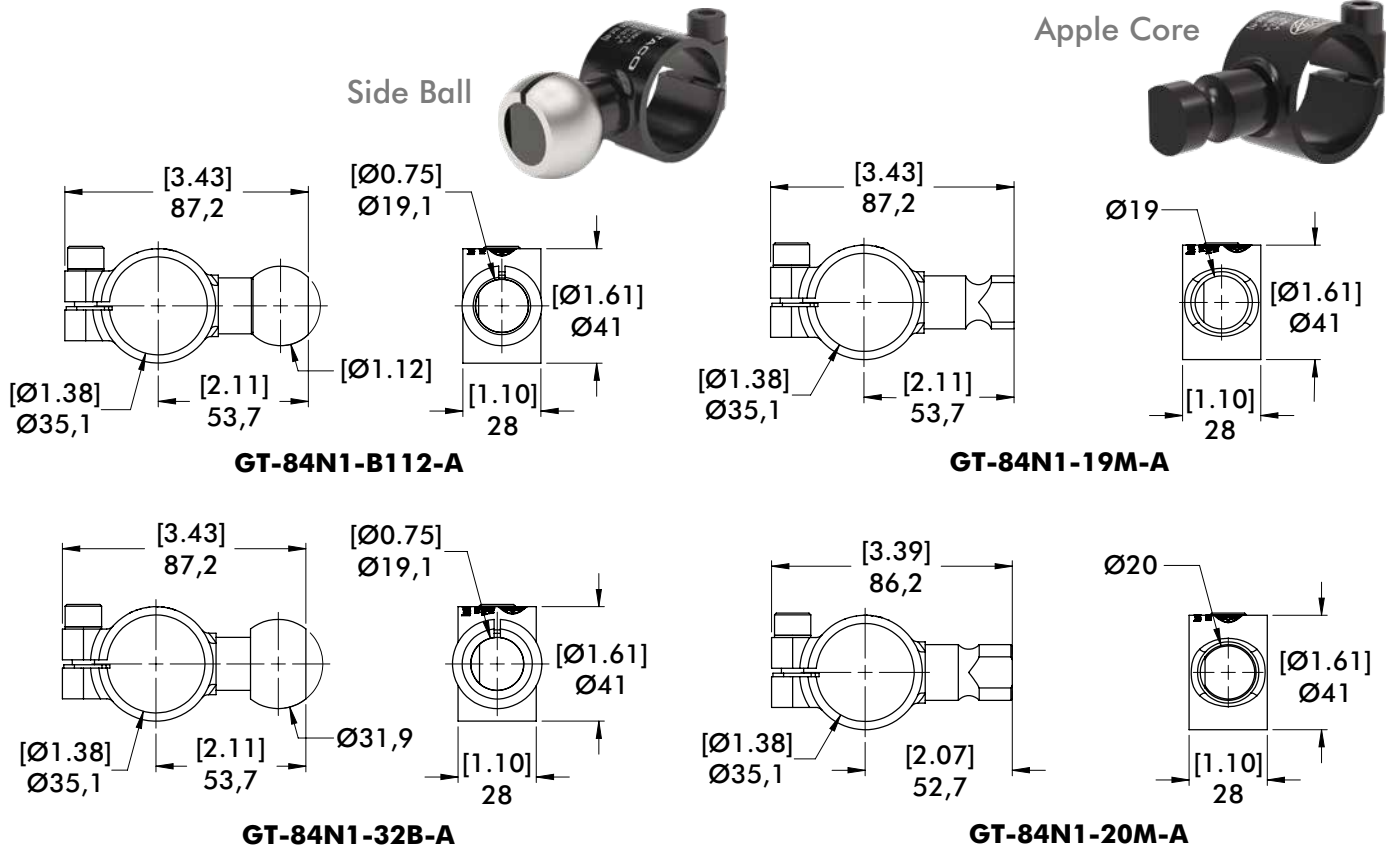
Jaw Tip Options



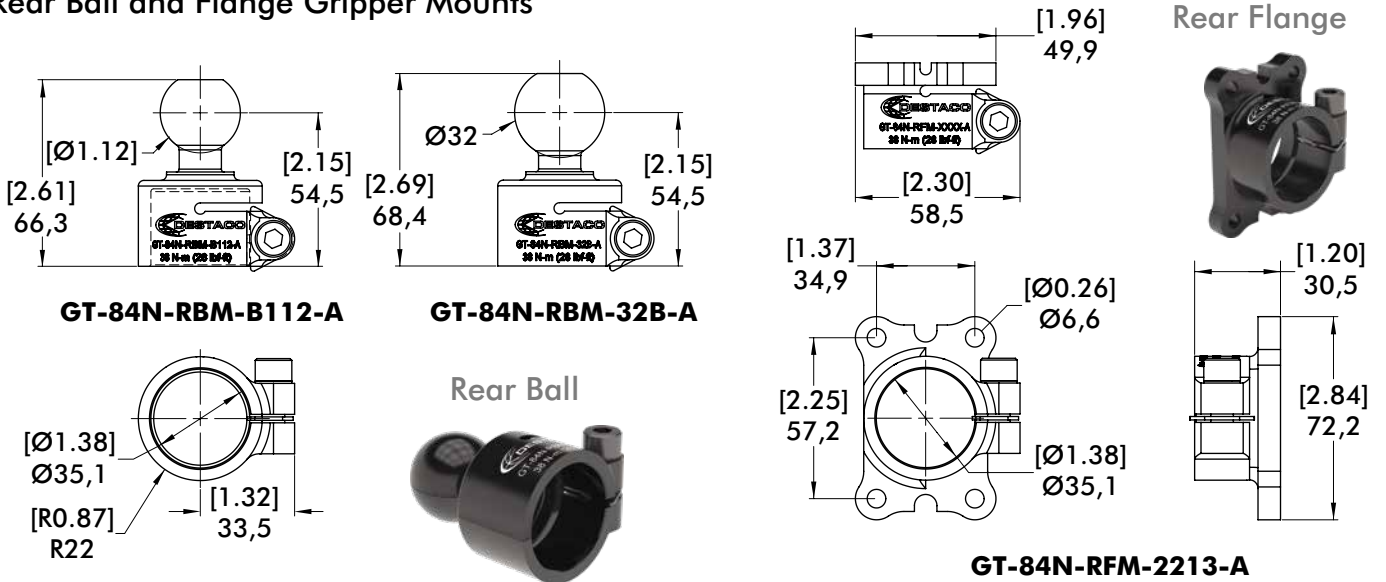
84N2 SERIES

Accelerate® Press Room Sheet Metal Grippers | Ordering Information

Side Ball and Apple Core Gripper Mounts



Rear Ball and Flange Gripper Mounts

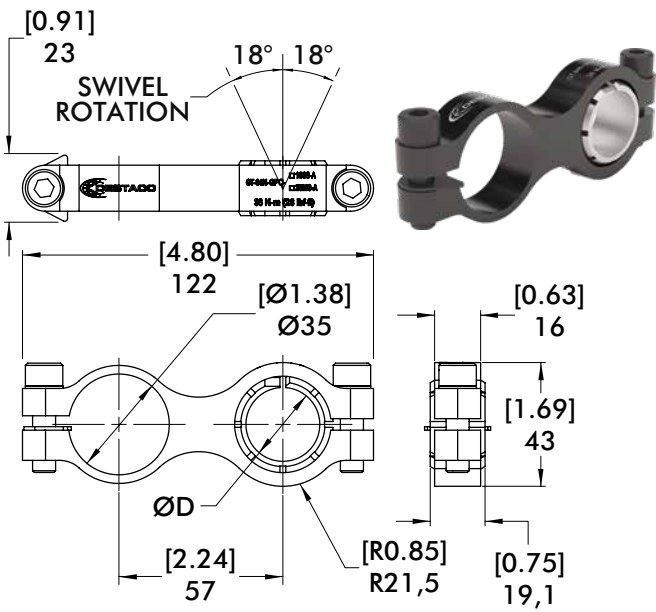


Side Ball and Apple Core	Part Number	Rear Ball and Flange	Part Number
1.125 in. (28.5mm) Side Ball	GT-84N1-B112-A	1.125 in. (28.5mm) Rear Ball	GT-84N-RBM-B112-A
32mm Side Ball	GT-84N1-32B-A	32mm Rear Ball	GT-84N-RBM-32B-A
19mm Applecore	GT-84N1-19M-A	Rear Flange	GT-84N-RFM-2213-A
20mm Applecore	GT-84N1-20M-A		

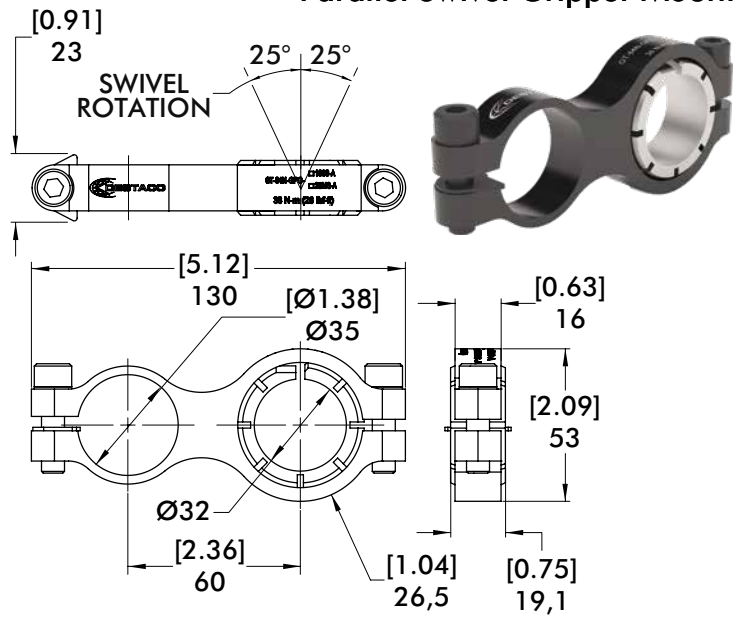
84N2 SERIES

Accelerate® Press Room Sheet Metal Grippers | Ordering Information

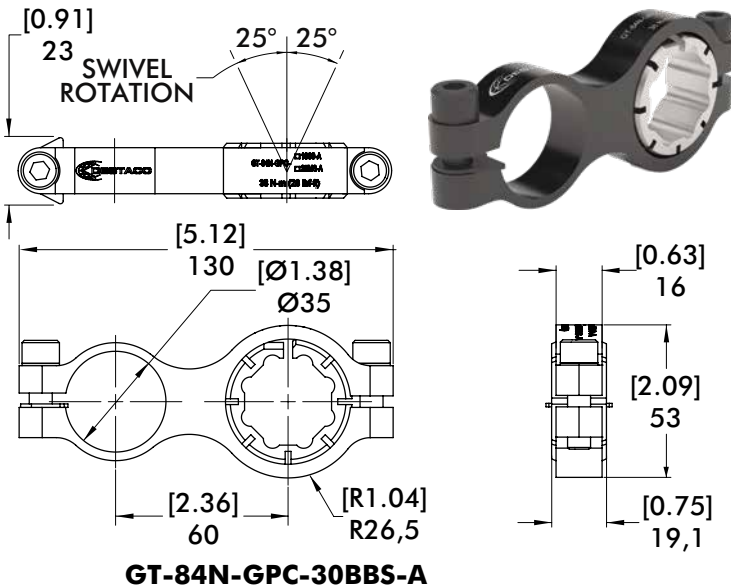
Parallel Swivel Gripper Mount



ØD=1.00 in. **GT-84N-GPC-100S-A**
 ØD=25mm **GT-84N-GPC-25MS-A**



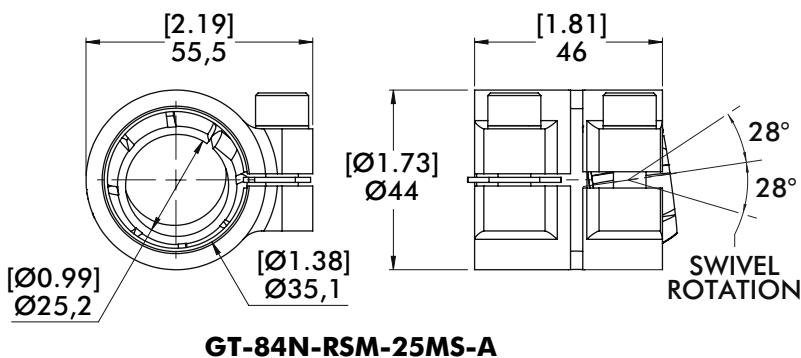
GT-84N-GPC-125S-A



GT-84N-GPC-30BBS-A

Parallel Swivel Mount	Part Number
1" Swivel Mount	GT-84N-GPC-100S-A
1-1/4" Swivel Mount	GT-84N-GPC-125S-A
25mm Swivel Mount	GT-84N-GPC-25MS-A
30mm Body Builder Swivel Mount	GT-84N-GPC-30BBS-A

Rear Clamp Swivel Mount



GT-84N-RSM-25MS-A

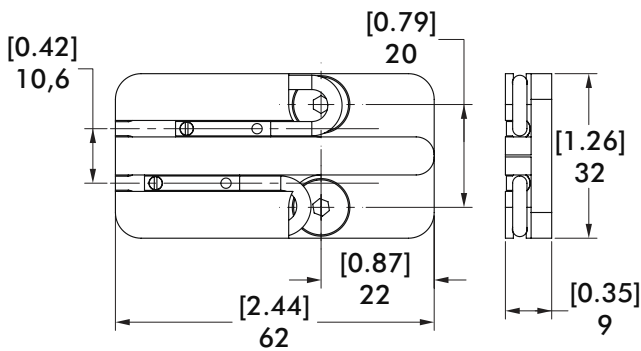


Rear Swivel Mount	Part Number
25mm Swivel Mount	GT-84N-RSM-25MS-A

84N2 SERIES

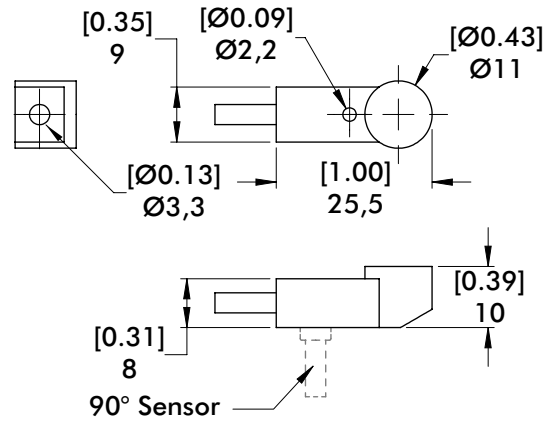
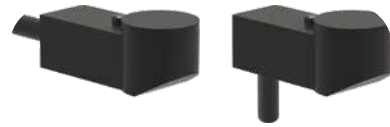
Accelerate® Press Room Sheet Metal Grippers | Dimensions and Technical Specifications

Side Mount Magneto-resistive Sensor



Description	Part Number
PNP Magneto-resistive Sensor Kit	8EA-1035-1
NPN Magneto-resistive Sensor Kit	8EA-1036-1
4mm PNP Magneto-resistive Sensor	OISP-017
4mm NPN Magneto-resistive Sensor	OISN-017

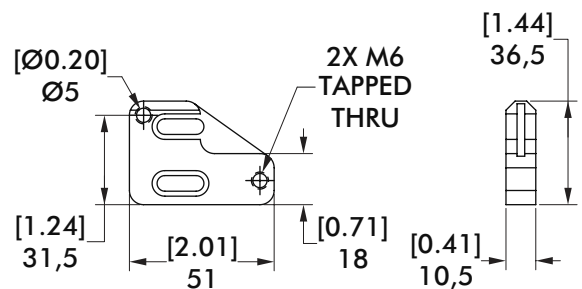
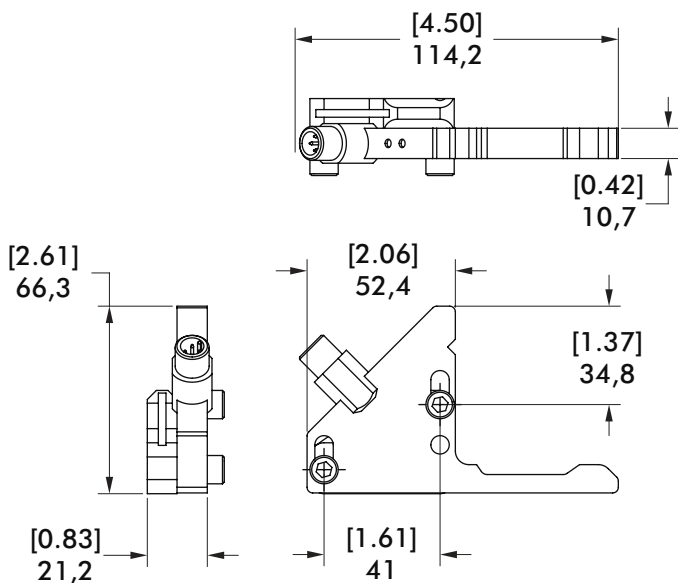
Jaw Part Present Sensor



Description	Part Number
PNP Inductive Part Present Sensor	8EA-1024-1
NPN Inductive Part Present Sensor	8EA-1025-1
90° PNP Inductive Part Present Sensor*	8EA-1027-1
90° NPN Inductive Part Present Sensor*	8EA-1028-1

*for 84N1 PC Jaw Style only.

Infrared Part Present Sensor and Mounting Adapter

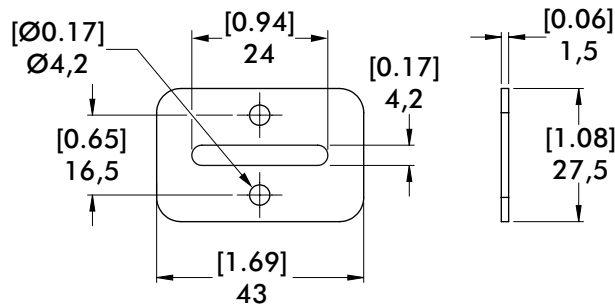


Description	Part Number
Infrared Part Present Sensor Kit	8EA-1023-1

84N2 SERIES

Accelerate® Press Room Sheet Metal Grippers | Dimensions and Ordering Information

Sheet Stop Option



Description

Sheet Stop Kit

Part Number

8MH-1003-1

Includes socket head cap mounting screws

Specifications

Specification	Unit	84N1
Grip Force at 5 bar	N [lbs]	Up to 1000 [225]
Weight (FA Option, No Tips)	Kg [lb]	0.27 [0.6]
Size L x W x H (open)	mm [in]	110 x 43 x 64 [4.33] x [1.69] x [2.52]
Actuation Time	ms	33
Minimum Operating Pressure	bar [psi]	3 [44]
Opening Angles		30°, 45°, 60°, 75°
Piston Ø	mm [in]	25 [0.98]
Air Consumption/Cycle	L [in ³]	0,015 [0.92]
Temperature Range	C° [F°]	-35° to 80° [-31° to 176]